

39 PAGES

FURNISHINGS SUBSECTION**TABLE OF CONTENTS**

| Fig. No. | Title | Page |
|----------|--|--------|
| 2.5-1 | Furnishings | 2.5-2 |
| 2.5-2 | Instrument Panel Glare Shield Installation | 2.5-6 |
| 2.5-3 | Windshield Reflection Baffle Installation | 2.5-8 |
| 2.5-4 | Pilot Check List Installation | 2.5-10 |
| 2.5-5 | Ejection Seat Safety Pin and Streamer Installation | 2.5-12 |
| 2.5-6 | Ejection Seat Safety Pin and Streamer Installation | 2.5-14 |
| 2.5-7 | Map and Flight Report Case Installation | 2.5-16 |
| 2.5-8 | Luggage Container Installation | 2.5-18 |
| 2.5-9 | Cockpit Trim Installation LH | 2.5-20 |
| 2.5-10 | Cockpit Trim Installation RH | 2.5-22 |
| 2.5-11 | Cockpit Control Guards | 2.5-26 |
| 2.5-12 | Thermal Cockpit Blanket Installation | 2.5-30 |
| 2.5-13 | Nose Wheel Well Splash Cover Installation | 2.5-32 |
| 2.5-14 | Canopy Breaker Tool and Storage Facility Installation | 2.5-36 |
| 2.5-15 | Rear View Mirror Installation | 2.5-38 |

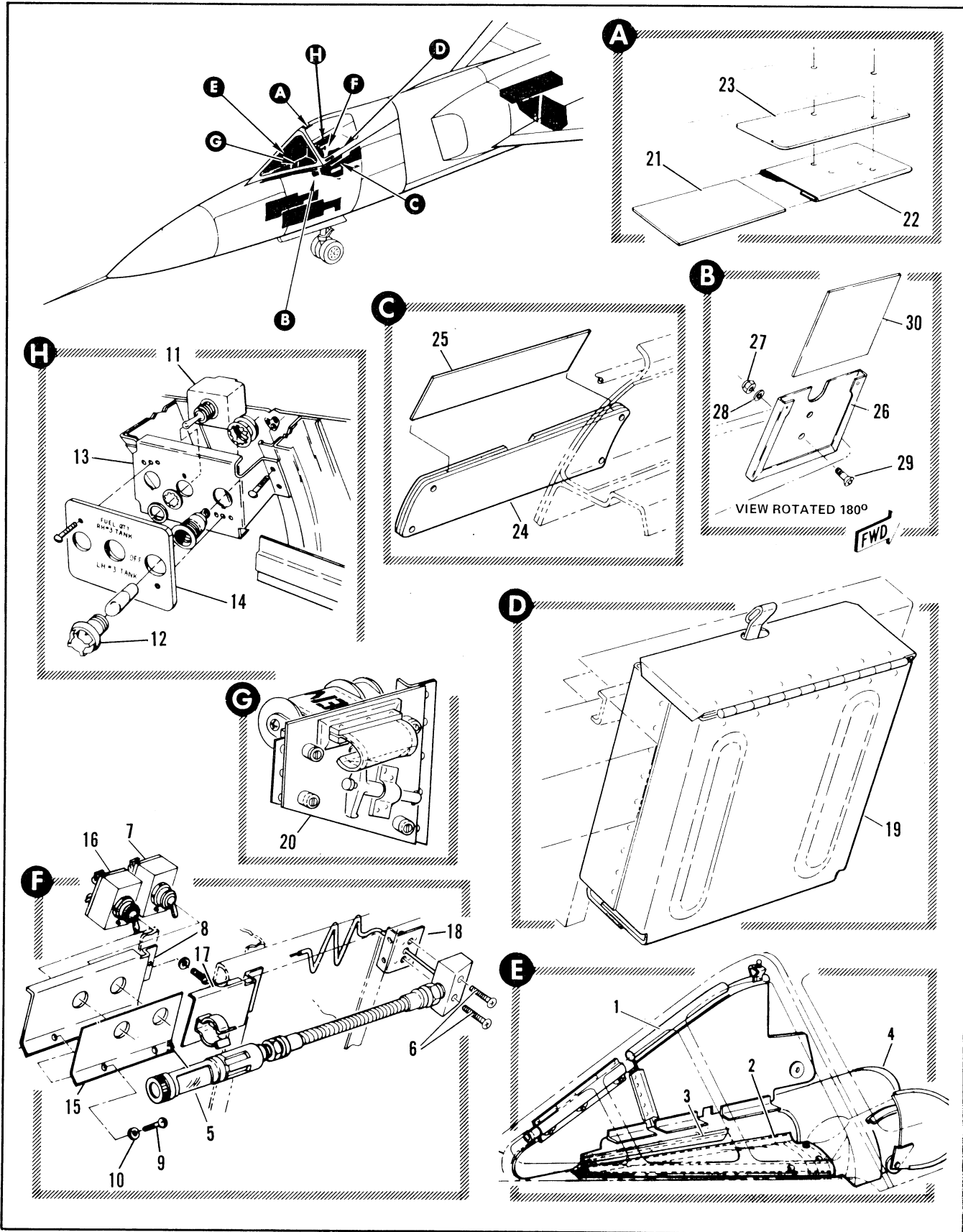


Figure 2.5-1. Furnishings (Sheet 1 of 2)

| FIGURE AND INDEX NUMBER | PART NUMBER | DESCRIPTION | UNITS PER ASSY. | USABLE ON CODE | |
|-------------------------|--------------|---|-----------------|----------------|----|
| | | | | FROM | TO |
| | | 1 2 3 4 5 6 | | | |
| 2.5-1- 1 | | • BAFFLE INSTL, WINDSHIELD REFLECTION SEE FIG. 2.5-3 | RF | | |
| | 8-94879 | • SHIELD INSTL, REFLECTION STA 88 FOR NHA SEE FIG. 2.1-1 | RF | 35 | |
| - 2 | 8-94876-2 | • • SHIELD ASSY, REFLECTION STITCHED LH | 1 | 35 | |
| - 3 | 8-94876-1 | • • SHIELD ASSY, REFLECTION STITCHED RH | 1 | 35 | |
| - 4 | | • SHIELD INSTL, INSTRUMENT PANEL GLARE SEE FIG. 2.5-2 | RF | | |
| | 8-94895-1 | • LIGHT INSTL, MAP READING FOR NHA SEE FIG. 2.3-4 | RF | 35 | |
| - 5 | B9750-2 | • • LIGHT ASSY, MAP READING <72914> SPEC 8-09285-1 ATTACHING PARTS | 1 | 35 | |
| - 6 | MS51958-65 | • • SCREW (96906) -----X----- | 2 | 35 | |
| | 8-94895-3 | • SWITCH INSTL, MAP READING LIGHT FOR NHA SEE FIG. 2.3-8 | RF | 35 | |
| - 7 | 8906K698 | • • SWITCH, <15605> SPEC 8-06907-3 | 1 | 35 | |
| - 8 | 8-94895-29 | • • BRACKET | RF | 35 | |
| | 8-94895-31 | • • BRACKET | RF | 35 | 60 |
| | 8-61453-7 | • • BRACKET | 1 | 35 | |
| | | ATTACHING PARTS | | | |
| - 9 | MS51958-61 | • • SCREW (96906) | 3 | | |
| - 10 | AN960D10L | • • WASHER (88044) | 3 | | |
| | NAS430D3-48 | • • SPACER (80205) -----X----- | 1 | 35 | |
| - 11 | MS24525-27 | • SWITCH INSTL, FUEL QUANTITY SWITCH NO. 3 TANK (96906) | 1 | 35 | |
| - 12 | MS25010-4A | • • LIGHT ASSEMBLY (96906) | 2 | 35 | |
| | MS25237-327 | • • LAMP (96906) | 2 | 35 | |
| - 13 | 8-61456-7 | • • PLATE | 1 | 35 | |
| - 14 | 8-61455-7 | • • PANEL | 1 | 35 | |
| | | ATTACHING PARTS | | | |
| | MS35206-62 | • • SCREW (96906) | 2 | 35 | |
| | MS35206-231 | • • SCREW (96906) -----X----- | 2 | 35 | |
| - 15 | 8-95645 | • • NAMEPLATE, MAP READING LIGHT | RF | 35 | |
| | 8-61457-9 | • • NAMEPLATE | 1 | 35 | |
| - 16 | MS35058-31 | • • SWITCH (96906) | 1 | 35 | |
| - 17 | 8-94895-15 | • • CLIP ASSY, STOWAGE MAP READING LIGHT RIVETED | 1 | 35 | |
| - 18 | 8-94895-17 | • • PLATE ASSY, MAP READING LIGHT RIVETED | 1 | 35 | |
| - 19 | | • CASE INSTL, MAP AND FLIGHT REPORT SEE FIG. 2.5-7 | RF | | |
| - 20 | | • PIN AND STREAMER INSTL, EJECTION SEAT SAFETY SEE FIG 2.5-5 AND 2.5-6 | RF | | |
| | 8-38049 | • HOLDER INSTL, COMPASS CORRECTION CARD FOR NHA SEE FIG. 2.4-9 | RF | A | |
| | 8-38049-3 | • HOLDER INSTL, COMPASS CORRECTION CARD FOR NHA SEE FIG. 2.4-9 | RF | B | |
| - 21 | AN5823-1 | • • CARD, COMPASS CORRECTION (88044) | 1 | 35 | |
| - 22 | AN5800-1 | • • HOLDER ASSEMBLY(88044) | 1 | 35 | |
| - 23 | 8-38583-7 | • • NAMEPLATE, STANDBY COMPASS CORRECTION | 1 | 35 | |
| - 24 | 8-95556 | • • HOLDER ASSY, BONDED | RF | 35 | |
| - 25 | 8-95555 | • • NAMEPLATE, STANDARD UHF CHANNELS | RF | 35 | |
| 26 | 60M185305-1 | • HOLDER, ALTIMETER CORRECTION CARD ATTACHING PARTS | 1 | A | |
| - 27 | MS20365D440 | • NUT (96906) | 2 | A | |
| - 28 | AN960D4 | • WASHER (88044) | 2 | A | |
| - 29 | MS24693-2 | • SCREW (96906) -----X----- | 2 | A | |
| - 30 | AFTC-FORM146 | • CARD, ALTIMETER CORRECTION | 1 | A | |
| | | A AIRPLANES 835 THRU 47 AND 49 THRU 89 B AIRPLANES 48, 90 AND ON | | | |

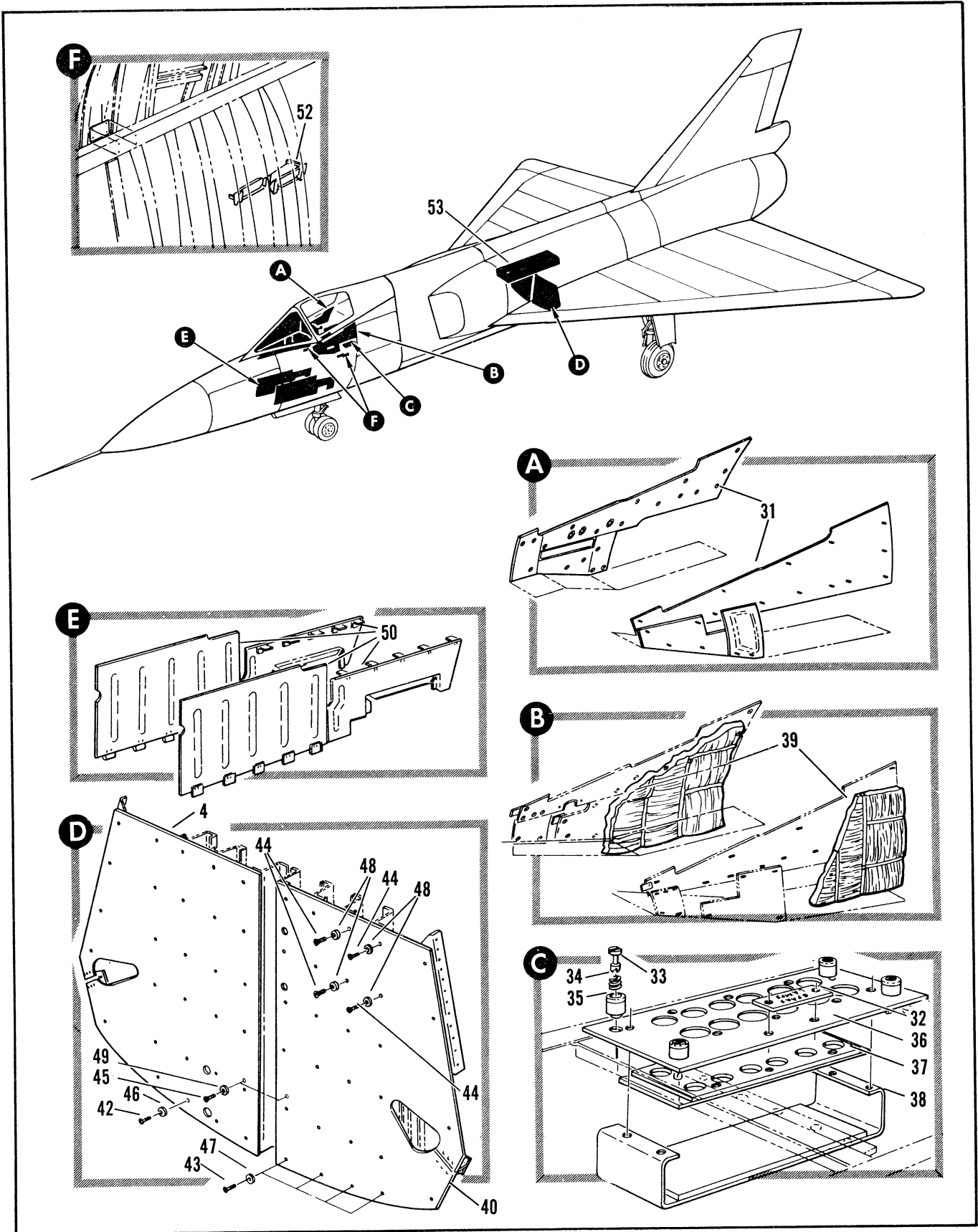


Figure 2.5-1. Furnishings (Sheet 2 of 2)

| FIGURE AND INDEX NUMBER | PART NUMBER | DESCRIPTION | UNITS PER ASSY. | USABLE ON CODE | |
|-------------------------|--------------|--|-----------------|----------------|-----|
| | | | | FROM | TO |
| 2.5-1- 31 | 8-95631 | • TRIM INSTL, COCKPIT SEE FIG. 2.5-9 • PANEL ASSY, SPARE LAMP STOWAGE REPLACED BY NOT INTCHG WITH 8-94681-5 FOR NHA SEE FIG. 2.16-8 | RF RF | 35 | 48 |
| - 32 | 8-92925 | • . NAMEPLATE SPARE LAMP | RF | 35 | 48 |
| - 33 | 8-95632 | • . PANEL ASSY, MOUNTING SPARE LAMP STOWAGE | RF | 35 | 48 |
| - 34 | PF3-1/2-38 | • . . STUD, <72794> 98-56501-001 | RF | 35 | 48 |
| - 35 | PS31/2 | • . . SPRING, <72794> 98-37003-003 | RF | 35 | 48 |
| - 35 | PG3-1/2 | • . . RETAINER, <72794> 97-58300-001 | RF | 35 | 48 |
| - 36 | 8-95632-7 | • . . PANEL | RF | 35 | 48 |
| - 37 | 8-95631-11 | • . RECEPTACLE ASSY, SPARE LAMP BONDED | RF | 35 | 48 |
| - 38 | 8-95631-7 | • . CUSHION ASSY, SPARE LAMP BONDED | RF | 35 | 48 |
| - 39 | | • BLANKET INSTL, THERMAL COCKPIT LH SEE FIG. 2.5-12 | RF | | |
| | 8-74999-1 | • SHIELD INSTL, PROTECTION STA 412 LH FOR NHA SEE FIG. 2.3-10 | RF | 35 | |
| | 8-74999-5 | • SHIELD INSTL, PROTECTION STA 412 RH FOR NHA SEE FIG. 2.3-10 | RF | 35 | B |
| - 40 | 8-74999-47 | • . SHIELD ASSY, RIVETED LH REPLACED BY SUITABLE SUB 8-74999-57 | RF | B | |
| | 8-74999-7 | • . SHIELD, LH ALT INTCHG WITH 8-74999-47 | RF | B | |
| | 8-74999-57 | • . SHIELD ASSY, RIVETED LH REPLACES SUITABLE SUB FOR 8-74999-47 | RF | B | |
| | 7144713-01 | • . SHIELD ASSY, (98750) RIVETED LH REPLACES 8-74999-47 | 1 | B | |
| | 7144713-03 | • . SHIELD ASSY, (98750) RIVETED LH REPLACES 8-74999-57 | 1 | B | |
| - 41 | 8-74999-49 | • . SHIELD ASSY, RIVETED RH REPLACED BY SUITABLE SUB 8-74999-59 | 1 | B | |
| | 8-74999-9 | • . SHIELD, RH ALT INTCHG WITH 8-74999-49 | RF | B | |
| | 8-74999-59 | • . SHIELD ASSY, RIVETED RH REPLACES SUITABLE SUB FOR 8-74999-49 | RF | B | |
| | 7144713-02 | • . SHIELD ASSY, (98750) RIVETED RH REPLACES 8-74999-49 | 1 | B | |
| | 7144713-04 | • . SHIELD ASSY, (98750) RIVETED RH REPLACES 8-74999-59 | 1 | B | |
| - 42 | MS35206-62 | • . ATTACHING PARTS • . SCREW (96906) | 24 | 35 | |
| - 43 | MS35206-62 | • . SCREW (96906) | 4 | 35 | 129 |
| | MS24694-50 | • . SCREW (96906) | 4 | 130 | |
| - 44 | MS35206-62 | • . SCREW (96906) | 4 | 35 | |
| - 45 | MS35207-263 | • . SCREW (96906) | 2 | B | |
| - 46 | 99-51509-024 | • . WASHER | 24 | 35 | |
| - 47 | 99-51509-024 | • . WASHER | 4 | 35 | 129 |
| - 48 | 99-51400-302 | • . WASHER | 4 | 130 | |
| - 48 | 99-51509-024 | • . WASHER | 4 | 35 | |
| - 49 | AN970-3 | • . WASHER -----X----- | 2 | B | |
| - 50 | | • COVER INSTL, NOSE WHEEL WELL SPLASH SEE FIG. 2.5-13 | RF | | |
| | 8-95569-1 | • PLATE INSTL, EMERGENCY DRAG CHUTE INSTRUCTION FOR NHA SEE FIG. 2.3-6 | RF | A | |
| - 51 | 8-95568-7 | • . PLATE, DRAG CHUTE INSTRUCTION | 1 | A | |
| - 52 | | • CHECK LIST INSTL, PILOT SEE FIG. 2.5-4 | RF | | |
| - 53 | | • CONTAINER INSTL, LUGGAGE SEE FIG. 2.5-8 | RF | | |

A AIRPLANES 35 THRU 47 AND 49 THRU 89
B AIRPLANES 48, 90 AND CN

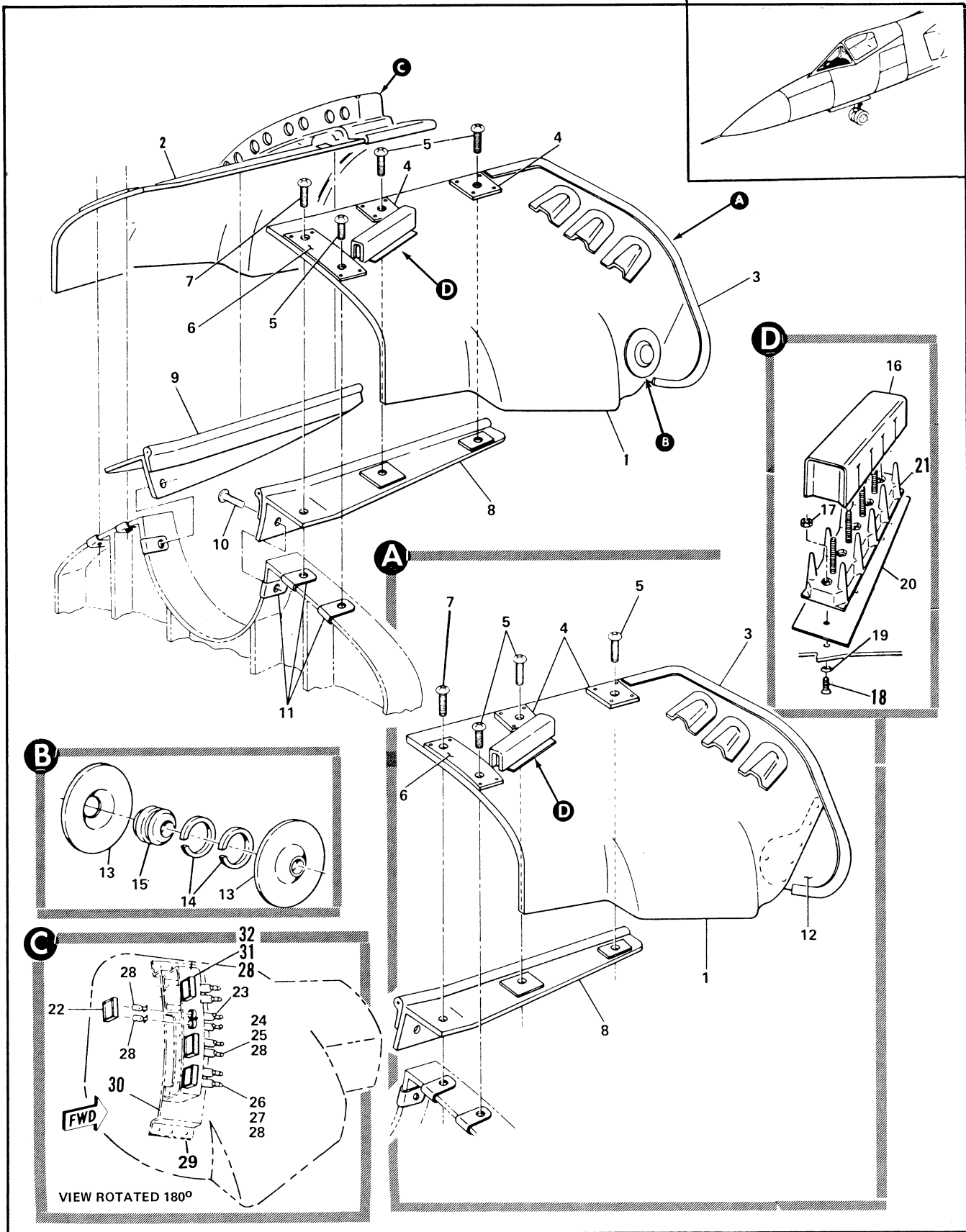


Figure 2.5-2. Instrument Panel Glare Shield Installation

| FIGURE AND INDEX NUMBER | PART NUMBER | DESCRIPTION | UNITS PER ASSY. | USABLE ON CODE | |
|-------------------------|--------------|--|-----------------|----------------|-----|
| | | | | FROM | TO |
| 2.5-2 | 8-94571-801 | GLARE SHIELD INSTALLATION, INSTRUMENT PANEL | 1 | ALL | |
| - 1 | 66E40455-5 | . SHIELD ASSY, GLARE LH (98750) (WILL BE MODIFIED IN ACCORDANCE WITH 8221172-10 (98750) PRIOR TO INSTALLATION) | 1 | ALL | |
| - 2 | 66E40455-6 | . SHIELD ASSY, GLARE RH (98750) (WILL BE MODIFIED IN ACCORDANCE WITH 8221172-20 (98750) PRIOR TO INSTALLATION) | 1 | ALL | |
| - 3 | 5250-01 | . Moulding (MAKE FROM G1400-38-1) | 1 | ALL | |
| - 4 | 66E40455-7 | . PLATE (98750) | 2 | ALL | |
| - 5 | MS35209-263 | . SCREW (96906) | 3 | ALL | |
| - 6 | 66E40455-8 | . PLATE (98750) | 1 | ALL | |
| - 7 | MS35207-264 | . SCREW (96906) | 1 | ALL | |
| - 8 | 66D40934-1 | . SUPPORT, LH (98750) (WILL BE MODIFIED IN ACCORDANCE WITH 8221171-10 (98750) PRIOR TO INSTALLATION) | 1 | ALL | |
| - 9 | 66D40934-2 | . SUPPORT, RH (98750) (WILL BE MODIFIED IN ACCORDANCE WITH 8221171-20 (98750) PRIOR TO INSTALLATION) | 1 | ALL | |
| - 10 | MS35207-264 | . SCREW (96906) | 2 | ALL | |
| - 11 | A4972-8-02 | . NUT (15653) | 6 | ALL | |
| - 12 | 8-94587-19 | . PLATE, LH | 1 | ALL | |
| - 12 | 8-94587-20 | . PLATE, RH | 1 | ALL | |
| - 13 | 8-94590 | . PLATE, BEARING | 2 | ALL | |
| - 14 | TRC827 | . RING, RETAINER | 2 | ALL | |
| - 15 | 8-94588 | . BEARING | 1 | ALL | |
| - 16 | 397-6 | . COVER, TERMINAL BLOCK (74212) | 1 | ALL | |
| - 17 | NAS679A04 | . NUT (80205) | 2 | ALL | |
| - 18 | MS24693-6 | . SCREW (96906) | 2 | 35 | 199 |
| - 18 | MS35206-217 | . SCREW (96906) | 2 | 200 | ON |
| - 19 | 99-51400-101 | . WASHER | 2 | 35 | 199 |
| - 19 | 99-51605-001 | . WASHER | 2 | 200 | ON |
| - 20 | 8-67524-11 | . NAMEPLATE, TERMINAL STRIP | 1 | 35 | 99 |
| - 20 | 8-67524-15 | . NAMEPLATE, TERMINAL STRIP | 1 | 99 | ON |
| - 21 | AN3436-2-4 | . TERMINAL BLOCK ASSY (88044) | 1 | 35 | 99 |
| - 21 | MS27212-1-6 | . TERMINAL BLOCK ASSY (96906) | 1 | 99 | ON |
| - 22 | 526-1573-005 | . CAP, STATUS LIGHT READY (81590) | 1 | ALL | |
| - 23 | 042-1573-001 | . BASE (81590) | 1 | ALL | |
| - 24 | 526-1573-002 | . CAP, STATUS LIGHT CONTACT | 1 | ALL | |
| - 25 | 042-1573-002 | . BASE (81590) | 1 | ALL | |
| - 26 | 526-1573-003 | . CAP, STATUS LIGHT DISCONNECT | 1 | ALL | |
| - 27 | 042-1573-003 | . BASE (81590) | 1 | ALL | |
| - 28 | MS25231-313 | . LAMP (96906) | 8 | ALL | |
| - 29 | 66D40409-1 | . BRACKET ASSY (98750) | 1 | | |
| - 30 | 7346572-01 | . SHIELD, FOUR LIGHT (98750) | 1 | | |
| - 31 | 526-1573-007 | . CAP, MASTER WARNING (81590) | 1 | ALL | |
| - 32 | 042-1573-006 | . BASE (81590) | 1 | ALL | |

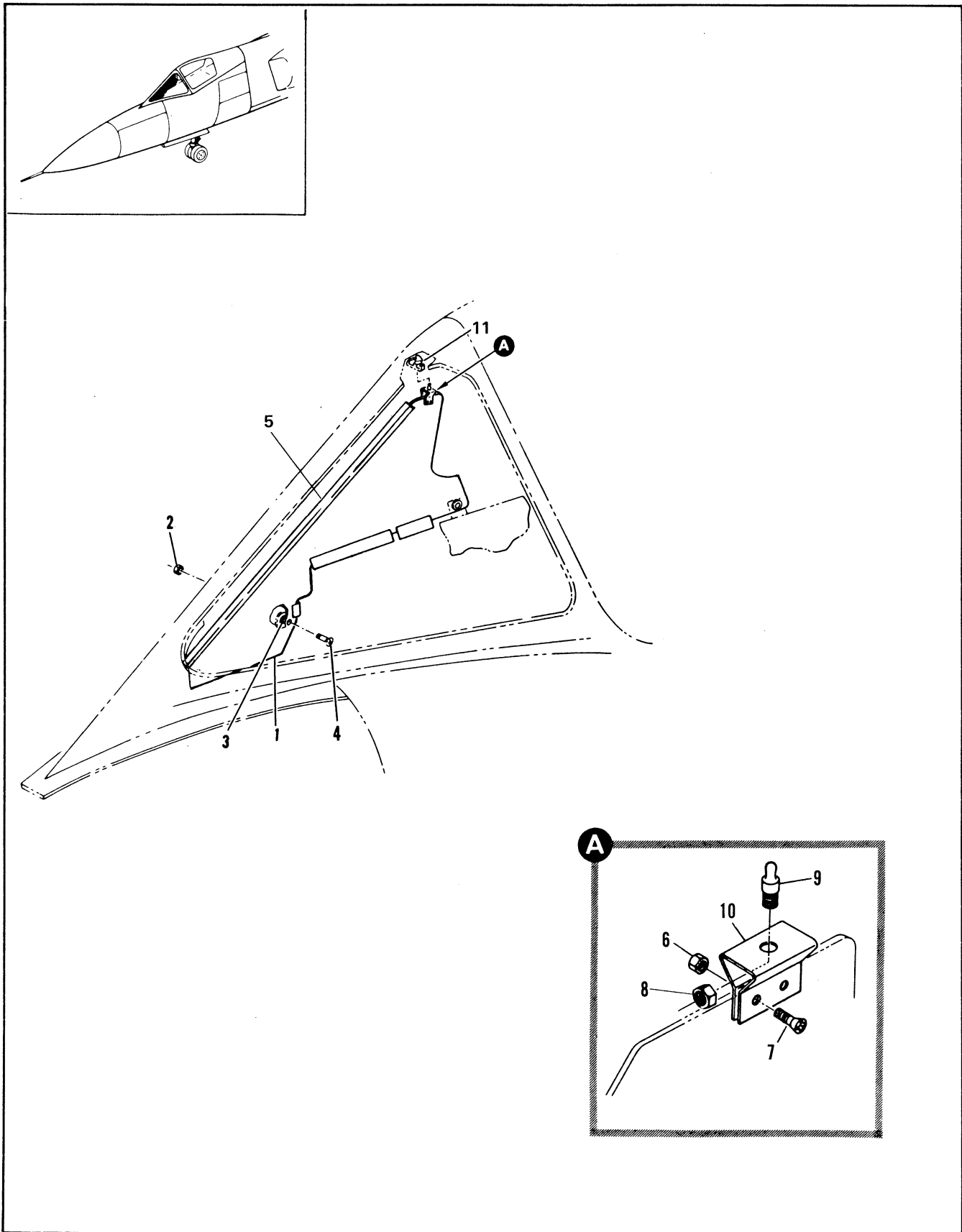


Figure 2.5-3. Windshield Reflection Baffle Installation

| FIGURE AND INDEX NUMBER | PART NUMBER | DESCRIPTION | UNITS PER ASSY. | USABLE ON CODE | |
|-------------------------|-------------------------------------|--|-----------------|----------------|----|
| | | | | FROM | TO |
| 2.5-3 | 8-94876-3 | BAFFLE INSTALLATION, WINDSHIELD REFLECTION FOR NHA SEE FIG. 2.1-1 | RF | 35 | 48 |
| | 8-94878-5 | BAFFLE INSTALLATION, WINDSHIELD REFLECTION FOR NHA SEE FIG. 2.1-1 | RF | 49 | |
| - 1 | 66E40981-1 7747257-10 | BAFFLE ASSEMBLY (98758) BAFFLE ASSEMBLY (98758) ATTACHING PARTS | RF 1 | A 35 | |
| - 2 | NAS679A3 | . NUT (80205) | 1 | 35 | |
| - 3 | AN960-10L | . WASHER (88044) | 1 | 35 | |
| - 4 | MS35207-264 | . SCREW (90906) ----X---- | 1 | 35 | |
| - 5 | 8-95502-15 8-94888 8-94955-17 | . . SEAL, MAKE FROM 8-94886 . . SEAL . . LATCH ASSY, WINDSHIELD REFLECTION BAFFLE ATTACHING PARTS | RF 1 | 35 35 | |
| - 6 | NAS679A06 | . . NUT (80205) | 2 | 35 | |
| - 7 | MS35206-229 | . . SCREW (96516) ----X---- | 2 | 35 | |
| - 8 | NAS679A06 | . . . NUT (80205) | 1 | 35 | |
| - 9 | P116-421-6-3 | . . . STUD, TYP | 1 | 35 | |
| - 10 | 8-94955-15 | . . . CLIP | 1 | 35 | |
| - 11 | | . LATCH ASSY, BAFFLE RIVETED SEE FIG. 2.4-2 INDEX 20 | RF | | |
| | | A 35 THRU 47 AND 49 THRU 89 B 48, 90 AND ON | | | |

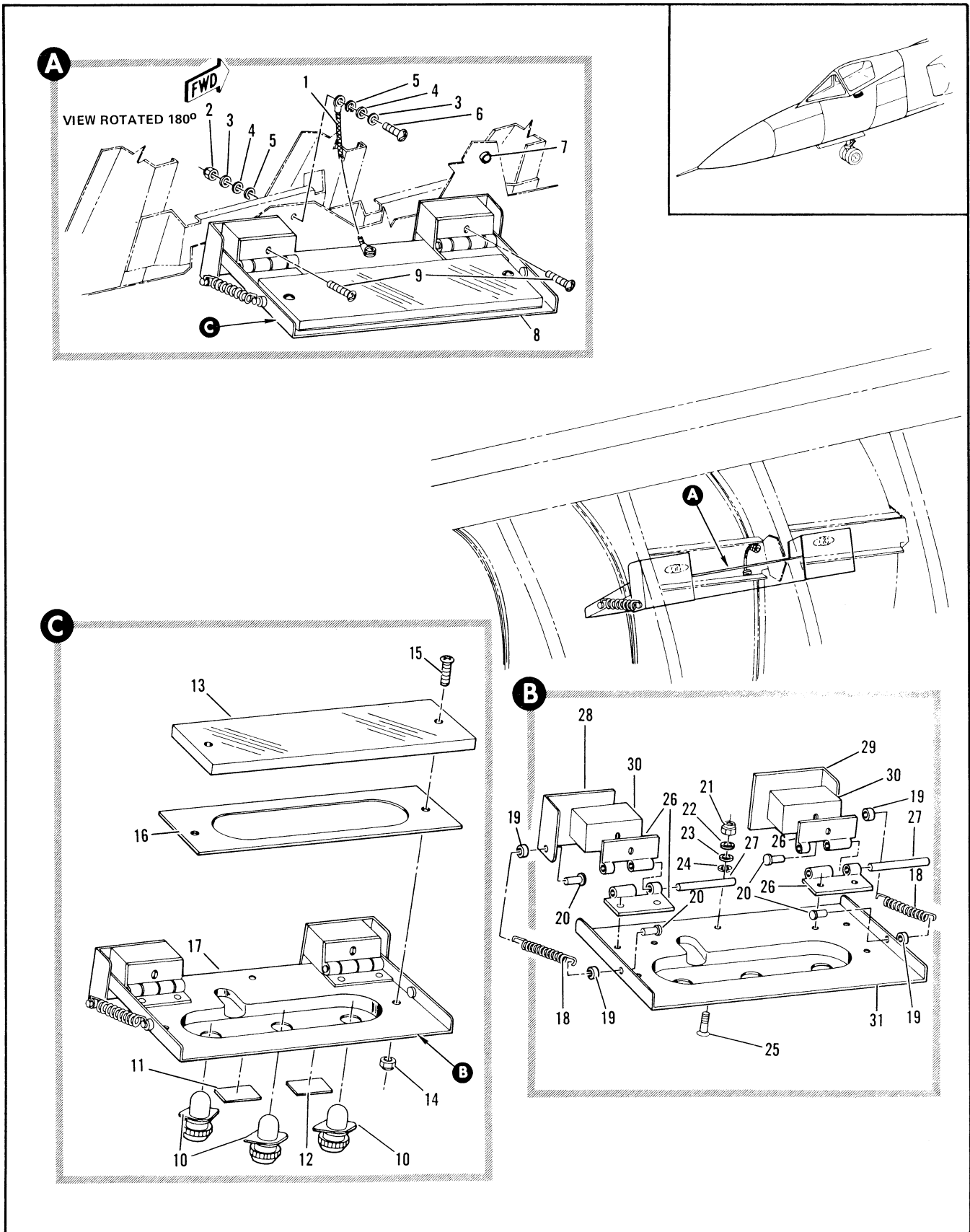


Figure 2.5-4. Pilot Check List Installation

| FIGURE AND INDEX NUMBER | PART NUMBER | DESCRIPTION | UNITS PER ASSY. | USABLE ON CODE | |
|-------------------------|---------------|---|-----------------|----------------|-----|
| | | | | FROM | TO |
| 2.5-4 | R-95591 | CHECK LIST INSTALLATION, PILOT FOR NHA SEE FIG. 2.3-6 | RF | 35 | 159 |
| - 1 | MS25083-2A53 | • JUMPER (96906) | RF | 35 | 159 |
| - 2 | NAS679A3 | ATTACHING PARTS • NUT (80205) | RF | 35 | 159 |
| - 3 | AN96010L | • WASHER (88044) | RF | 35 | 159 |
| - 4 | AN96010L | • WASHER (88044) | RF | 35 | 159 |
| - 5 | MS35338-43 | • WASHER (96906) | RF | 35 | 159 |
| - 6 | MS51956-62 | • SCREW (96906) | RF | 35 | 159 |
| - 7 | R-95591-17 | • BUMPER | RF | 35 | 159 |
| - 8 | R-94706-701 | • PLATE ASSY, PILOT CHECK LIST MOUNTING | RF | 35 | 159 |
| - 9 | MS35207-247 | ATTACHING PARTS • SCREW (96906) | RF | 35 | 159 |
| | R-94711-140 | • • LAMP INSTL, PILOT CHECK LIST MOUNTING PLATE | RF | 35 | 159 |
| | MS25237-327 | • • • LAMP (96906) | RF | 35 | 159 |
| - 10 | MS25023-1 | • • LIGHT ASSY, (96906) 95-63502-001 | RF | 35 | 159 |
| - 11 | R-94712-9 | • • PLATE, CHECK | RF | 35 | 159 |
| - 12 | R-94712-7 | • • PLATE, LIST | RF | 35 | 159 |
| - 13 | R-94719-13 | • • PLATE, PILOT CHECK LIST | RF | 35 | 159 |
| | | ATTACHING PARTS | | | |
| - 14 | NAS679A68 | • • NUT (80205) | RF | 35 | 159 |
| - 15 | MS35206-243 | • • SCREW (96906) | RF | 35 | 159 |
| - 16 | R-64482 | • • GASKET, PILOT CHECK LIST | RF | 35 | 159 |
| - 17 | R-94706-10 | • • PLATE ASSY, PILOT CHECK LIST | RF | 35 | 159 |
| - 18 | R-64374 | • • • SPRING, PILOT CHECK LIST | RF | 35 | 159 |
| - 19 | NAS42004-10A | • • • SPACER (80205) | RF | 35 | 159 |
| - 20 | MS27332-7 | • • • PIN (96906) | RF | 35 | 159 |
| - 21 | NAS679A16 | • • • NUT (80205) | RF | 35 | 159 |
| - 22 | AN96006L | • • • WASHER (88044) | RF | 35 | 159 |
| - 23 | AN96016L | • • • WASHER (88044) | RF | 35 | 159 |
| - 24 | MS35338-41 | • • • WASHER (96906) | RF | 35 | 159 |
| - 25 | MS35206-229 | • • • SCREW (96906) | RF | 35 | 159 |
| - 26 | R-94706-9 | • • • HINGE, HALF MAKE FROM MS20001H3-150 | RF | 35 | 159 |
| - 27 | MS27253-2-138 | • • • FIN, HINGE (96906) | RF | 35 | 159 |
| - 28 | R-94706-13 | • • • ANGLE, LH | RF | 35 | 159 |
| - 29 | R-94706-14 | • • • ANGLE, RH | RF | 35 | 159 |
| - 30 | R-94706-7 | • • • SPACER | RF | 35 | 159 |
| - 31 | R-94706-7 | • • • PLATE, PILOT CHECK LIST MOUNTING | RF | 35 | 159 |

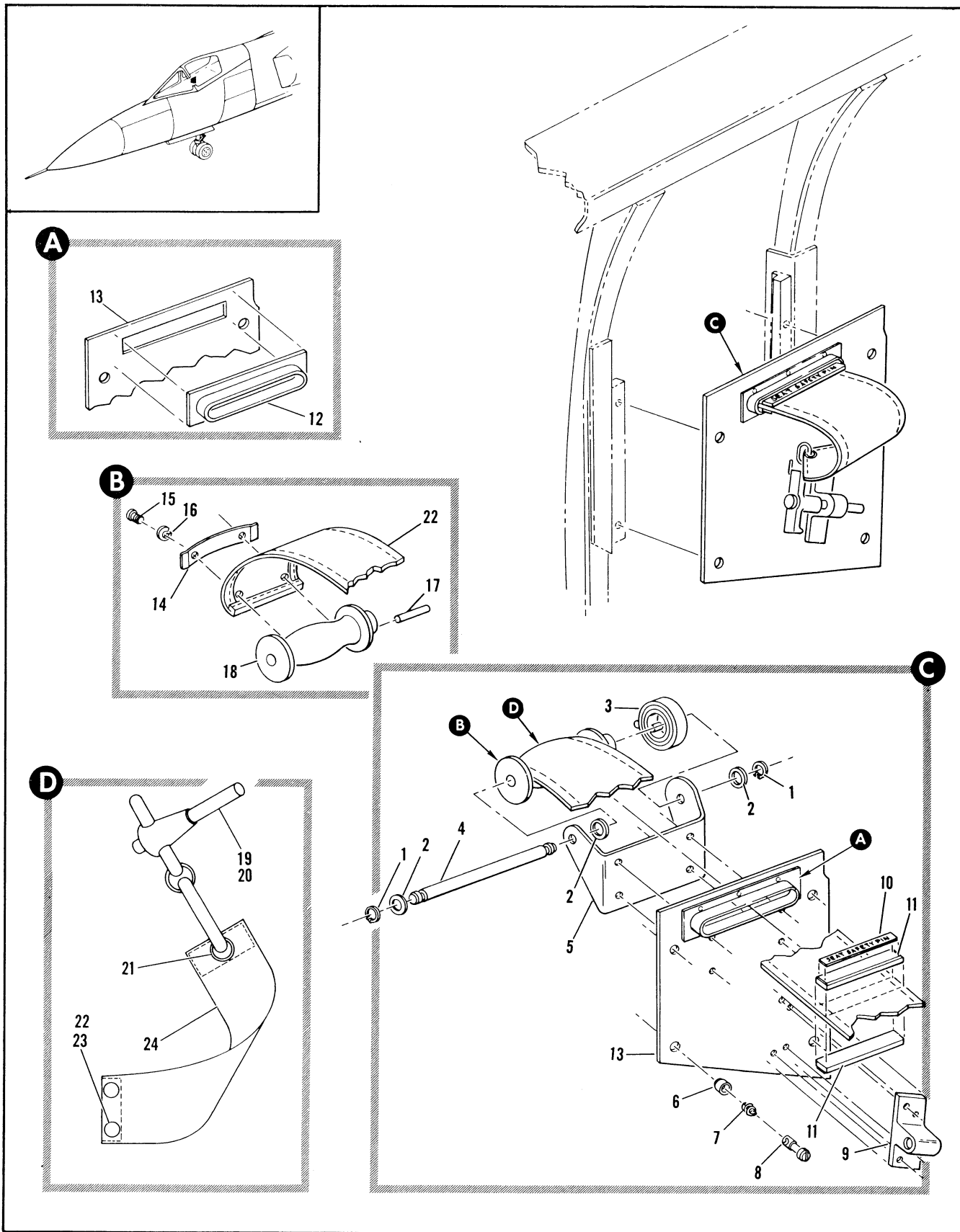


Figure 2.5-5. Ejection Seat Safety Pin and Streamer Installation

| FIGURE AND INDEX NUMBER | PART NUMBER | DESCRIPTION | UNITS PER ASSY. | USABLE ON CODE | |
|-------------------------|--------------|---|-----------------|----------------|----|
| | | | | FROM | TO |
| 2.5-5 | 8-95581 | PIN AND STREAMER INSTALLATION, EJECTION SEAT SAFETY FOR NMA SEE FIG. 2.3-6 | RF | 35 | 89 |
| | 8-95582-1 | • STREAMER ASSY, EJECTION SEAT SAFETY PIN STORAGE REPLACED BY NOT INTCHG WITH 8-95582-3 | 1 | 35 | 89 |
| | 8-95582-3 | • STREAMER ASSY, EJECTION SEAT SAFETY PIN STORAGE REPLACES NOT INTCHG WITH 8-95582-1 REPLACED BY NOT INTCHG WITH 28-94500-1 | 1 | 81 | 89 |
| - 1 | NASA70-18 | • • RING (82205) | 2 | 35 | 89 |
| - 2 | 89-818-9-028 | • • WASHER | 2 | 35 | 89 |
| - 3 | 8-99425-1 | • • SPRING, EJECTION SEAT SAFETY-PIN STORAGE | 1 | 35 | 89 |
| - 4 | 8-95585-1 | • • PIN, PILOT EJECTION SEAT SAFETY PIN STORAGE | 1 | 35 | 89 |
| - 5 | 8-95582-19 | • • BRACKET ASSY, EJECTION SEAT STORAGE WELDED | 1 | 35 | 89 |
| - 6 | PC3-1/2 | • • RETAINER, FASTENER <72794> 97-58300-001 | 4 | 35 | 89 |
| - 7 | PS3-1/2 | • • SPRING, FASTENER <72794> 98-37000-003 | 4 | 35 | 89 |
| - 8 | PF3-1/2-78 | • • STUD, FASTENER <72794> 98-565(1)-001 | 4 | 35 | 89 |
| - 9 | 8-94035 | • • BLOCK | 1 | 35 | 89 |
| - 10 | 8-95502 | • • NAMEPLATE, SEAT PIN STORAGE REPLACED BY NOT INTCHG WITH 28-94502 | 1 | 35 | 89 |
| - 11 | 8-95517-11 | • • CLAMP | 2 | 35 | 89 |
| - 12 | 8-95582-05 | • • GUIDE | 1 | 35 | 89 |
| - 13 | 8-95582-27 | • • COVER | 1 | 35 | 89 |
| | 8-95582-11 | • • SPOOL ASSEMBLY | 1 | 35 | 89 |
| - 14 | 8-95582-13 | • • • CLIP | 1 | 35 | 89 |
| | | ATTACHING PARTS | | | |
| - 15 | MS35206-227 | • • • SCREW (96996) | 2 | 35 | 89 |
| - 16 | MS35338-41 | • • • WASHER (96906) -----X----- | 2 | 35 | 89 |
| - 17 | 96-79700-006 | • • • PIN | 1 | 35 | 89 |
| - 18 | 8-95584-1 | • • • SPOOL, EJECTION SEAT SAFETY PIN STORAGE | 1 | 35 | 89 |
| | 806688-403 | • • STREAMER ASSY, EJECTION SEAT SAFETY PIN STORAGE (92824) PART OF SEAT ASSY 803498-413, SEE T.O. 13A5-18-84 | 1 | 35 | |
| - 19 | MS17985-414 | • • • PIN (96906) | 1 | 35 | |
| - 20 | #14 | • • • RING, SPLIT KEY (10266) | 1 | 35 | |
| - 21 | MS26230-010 | • • • GROMMET (96906) | 1 | 35 | |
| - 22 | AN227-78 | • • • SOCKET (98044) | 2 | 35 | |
| - 23 | AN227-68 | • • • BUTTON (98044) | 2 | 35 | |
| - 24 | 806688-3 | • • • CLOTH, STITCHED (92824) (SPEC CONT DWG WAC 3570-3) | 1 | 35 | |

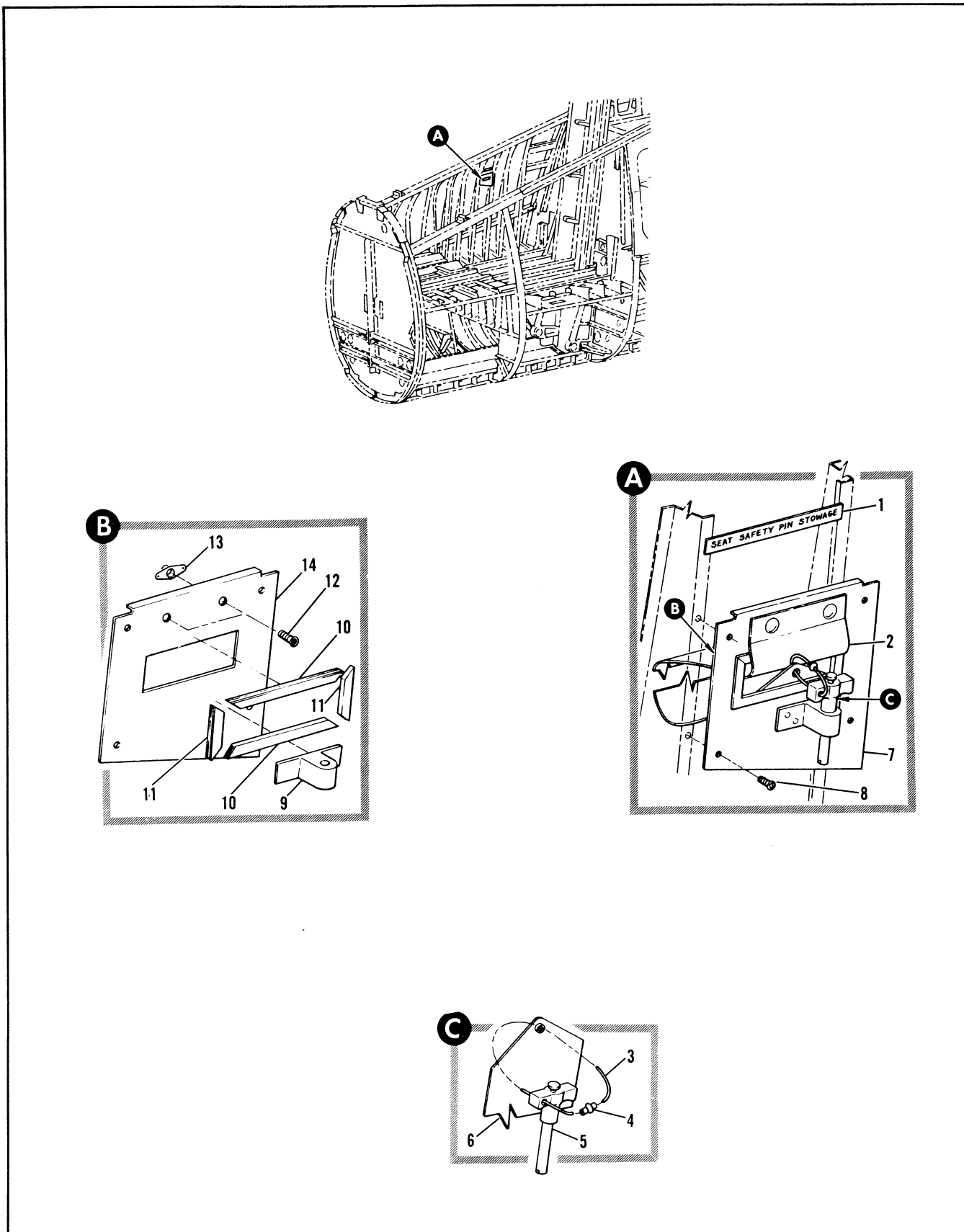


Figure 2.5-6. Ejection Seat Safety Pin and Streamer Installation

| FIGURE AND INDEX NUMBER | PART NUMBER | DESCRIPTION | UNITS PER ASSY. | USABLE ON CODE | |
|-------------------------|--------------|--|-----------------|----------------|-----|
| | | | | FROM | TO |
| 2.5-6 | R-95590 | PIN AND STREAMER INSTALLATION, EJECTION SEAT SAFETY FOR NHA SEE FIG. 2.3-2 | 1 | 35 | |
| - 1 | 28-945002 | • NAMEPLATE EJECTION SEAT SAFETY PIN STOWAGE REPLACES NOT INTCHG WITH R-95602 | 1 | 35 | |
| - 2 | 28-94500-1 | • STREAMER ASSY, EJECTION SEAT SAFETY PIN STOWAGE REPLACES NOT INTCHG WITH R-95582-3 REPLACED BY SUITABLE SUB 28-94500-801 OR 28-94500-803 | 1 | 35 | 188 |
| | 28-94500-201 | • STREAMER ASSY, EJECTION SEAT SAFETY PIN STOWAGE REPLACES SUITABLE SUB FOR 28-94500-1 REPLACED BY SUITABLE SUB 28-94500-803 | 1 | 90 | 264 |
| | 80666R-403 | • STREAMER ASSY, EJECTION SEAT SAFETY PIN STOWAGE REPLACES SUITABLE SUB FOR 28-94500-1 OR 28-94500-801 | 1 | 265 | |
| - 3 | 28-94500-11 | • • CABLE | 1 | 35 | |
| - 4 | AN6302 | • • TERMINAL (88044) | 1 | 35 | |
| - 5 | 54404-4-14T | • • PIN, QUICK RELEASE <84256> 96-78805-009 | 1 | 35 | 188 |
| | 54404-19T-P | • • PIN, QUICK RELEASE <84256> 96-78805-003 | 1 | 50 | |
| - 6 | 28-94500-9 | • • STREAMER ASSY, STITCHED | 1 | 90 | 264 |
| | 28-94500-13 | • • STREAMER ASSY, STITCHED | 1 | 265 | |
| - 7 | R-95590-25 | • COVER ASSY, RIVETED ATTACHING PARTS | 1 | 35 | |
| - 8 | MS35206-A1 | • SCREW (26506) ----X---- | 4 | 35 | |
| - 9 | 28-94507 | • • BLOCK, EJECTION SEAT SAFETY PIN STOWAGE | 1 | 35 | |
| - 10 | R-95590-9 | • • MOULDING | 2 | 35 | |
| - 11 | R-95590-11 | • • MOULDING | 2 | 35 | |
| - 12 | AN227-1000 | • • STUD (88044) | 2 | 35 | |
| - 13 | NAS097A3 | • • NUT PLATE (80205) | 2 | 35 | |
| - 14 | R-95590-23 | • • COVER | 1 | 35 | |

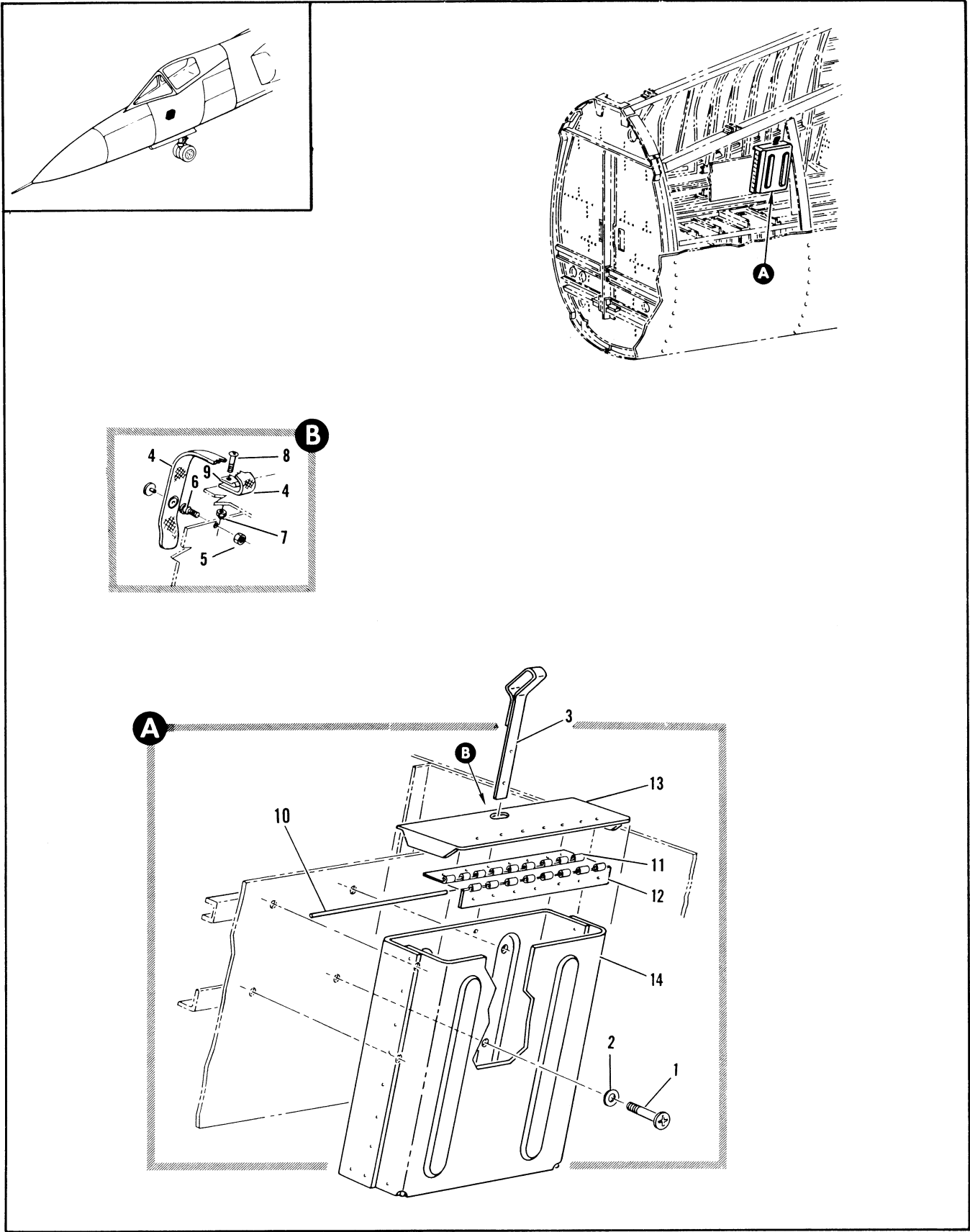


Figure 2.5-7. Map and Flight Report Case Installation

| FIGURE AND INDEX NUMBER | PART NUMBER | DESCRIPTION | UNITS PER ASSY. | USABLE ON CODE | |
|-------------------------|--------------|---|-----------------|----------------|----|
| | | | | FROM | TO |
| | | | | 1 | 2 |
| 2.5-7 | 8-95923 | CASE INSTALLATION, MAP AND FLIGHT REPORT FOR NHA SEE FIG. 2.3-4 | RF | 35 | |
| | 8-94971-3 | • CASE ASSEMBLY | 1 | 35 | 89 |
| | 8-94971-5 | • CASE ASSEMBLY | 1 | 90 | |
| | | ATTACHING PARTS | | | |
| - 1 | MS35206-62 | • SCREW (96906) | 4 | 35 | |
| - 2 | AN944-10L | • WASHER (88044) | 4 | 35 | |
| | | ----X---- | | | |
| - 3 | 8-94905-3 | • • LATCH | 1 | 35 | 89 |
| - 4 | Q5738M35.5 | • • STRAP | 1 | 90 | |
| | | ATTACHING PARTS | | | |
| - 5 | NAS67903 | • • NUT (80205) | 1 | 90 | |
| - 6 | AN227-10F5 | • • STUD (88044) | 1 | 90 | |
| - 7 | 26C02 | • • NUT, <80539> 96-37561-002 | 1 | 90 | |
| - 8 | NAS221-8 | • • SCREW (80205) | 1 | 90 | |
| - 9 | 96-80300-001 | • • PLATE | 1 | 90 | |
| | | ----X---- | | | |
| - 10 | MS20253-846 | • • PIN (96906) | 1 | 35 | |
| - 11 | 8-94971-7 | • • HINGE, HALF MAKE FROM AN257X3-835 | 1 | 35 | |
| - 12 | 8-94971-9 | • • HINGE, HALF MAKE FROM AN257X3-835 | 1 | 35 | |
| - 13 | 8-94973-7 | • • COVER, MAP AND FLIGHT REPORT CASE | 1 | 35 | 93 |
| | | REPLACED BY SUITABLE SUB 8-94973-9 | | | |
| | 8-94973-9 | • • COVER, MAP AND FLIGHT REPORT CASE | 1 | 90 | |
| | | REPLACES SUITABLE SUB FOR 8-94973-7 | | | |
| - 14 | 8-95905 | • • CASE ASSY, MAP AND FLIGHT REPORT BONDED | 1 | 35 | |
| | 8-94972-1 | • • CASE ASSY, MAP AND FLIGHT REPORT RIVETED | RF | 35 | |
| | | ALT INTCHG WITH 8-95905 | | | |

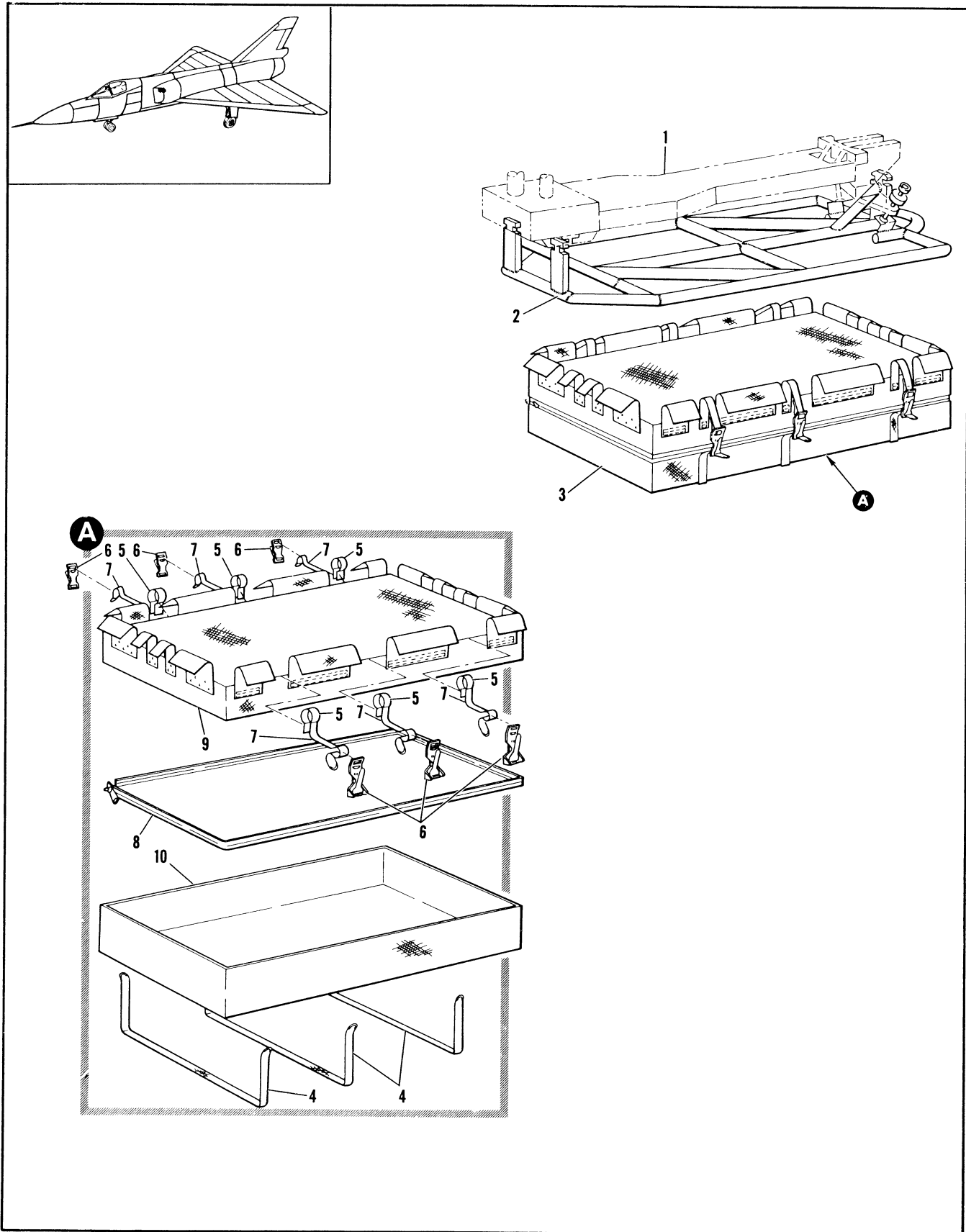


Figure 2.5-8. Luggage Container Installation

| FIGURE AND INDEX NUMBER | PART NUMBER | DESCRIPTION 1 2 3 4 5 6 | UNITS PER ASSY. | USABLE ON CODE | |
|-------------------------|----------------|---|-----------------|----------------|----|
| | | | | FROM | TO |
| 2.5-8 | 8-93815 | CONTAINER INSTALLATION, LUGGAGE FOR NHA SEE FIG. 2.1-1 | RF | 130 | |
| - 1 | | • EJECTOR ASSY. MB-1 | RF | | |
| - 2 | 8-93813 | • FRAME ASSY, LUGGAGE CONTAINER WELDED | 1 | 130 | |
| - 3 | 8-93814 | • CONTAINER ASSY, LUGGAGE WITH 8-93814-7 BAG AND TIED | 1 | 130 | |
| - 4 | 99-56500-803 | • • WEBBING | 3 | 130 | |
| - 5 | 98-97000-004 | • • TIP | 6 | 130 | |
| - 6 | 91-10500-004 | • • BUCKLE | 6 | 130 | |
| - 7 | 99-56500-802 | • • WEBBING | 6 | 130 | |
| - 8 | AN229-3PL330-1 | • • FASTENER (88044) | 1 | 130 | |
| - 9 | 8-93814-21 | • • TOP | 1 | 130 | |
| - 10 | 8-93814-8 | • • BAG | 1 | 130 | |

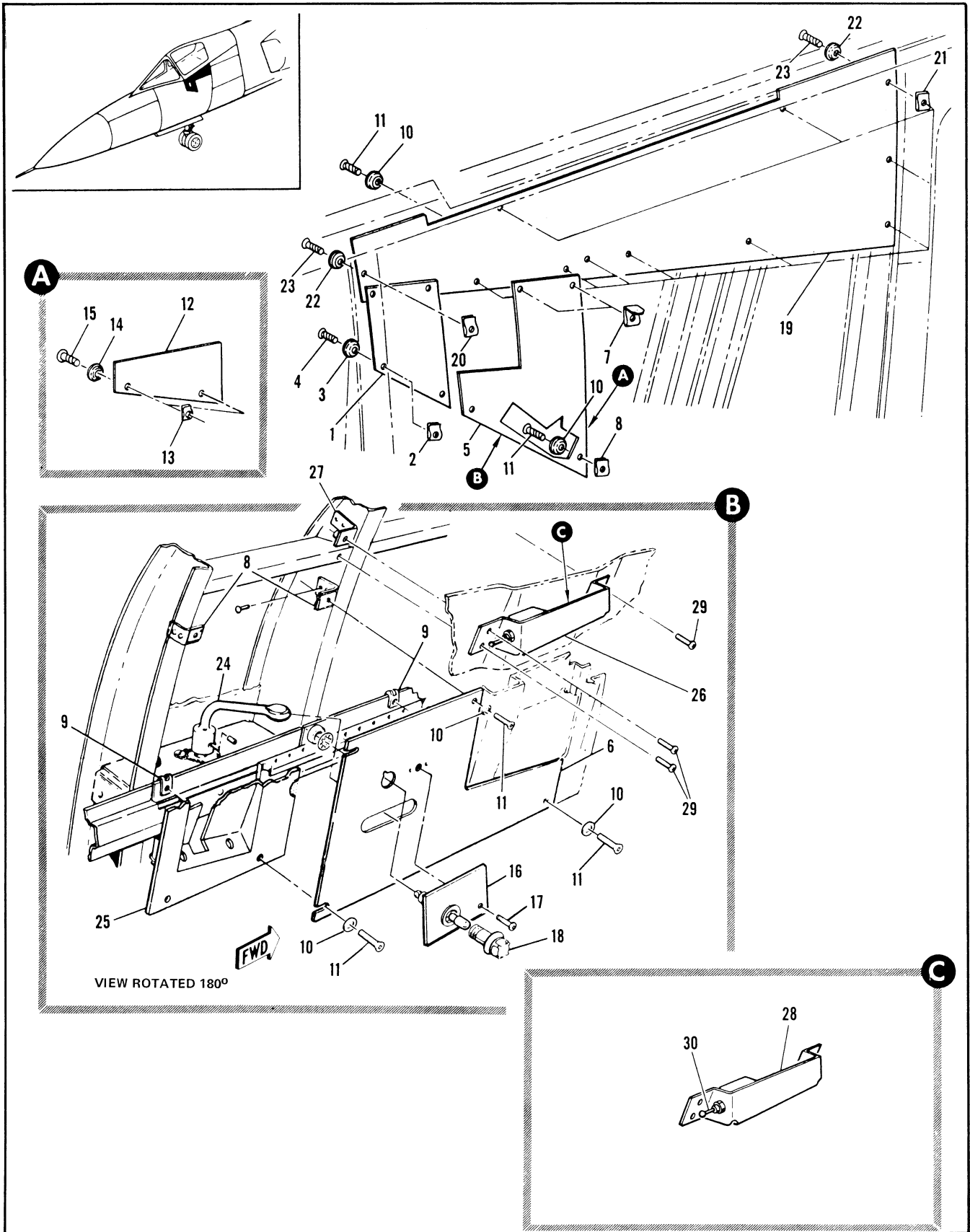


Figure 2.5-9. Cockpit Trim Installation LH

| FIGURE AND INDEX NUMBER | PART NUMBER | DESCRIPTION 1 2 3 4 5 6 | UNITS PER ASSY. | USABLE ON CODE | |
|-------------------------|--------------|---|-----------------|----------------|-----|
| | | | | FROM | TO |
| 2.5-9 | 8-95617-1 | TRIM INSTALLATION, COCKPIT LH FOR NHA SEE FIG. 2.3-6 | RF | 35 | |
| - 1 | 8-95617-29 | • PANEL, COCKPIT TRIM LH ATTACHING PARTS | 1 | 35 | |
| - 2 | A6452-873 | • NUT, LH <78553> 96-37302-002 | 4 | 35 | |
| - 3 | 99-51404-001 | • WASHER, LH | 4 | 35 | |
| - 4 | MS24619-22 | • SCREW, LH (96906) ----X---- | 4 | 35 | |
| - 5 | 8-95617-9 | • PANEL, COCKPIT TRIM LH REPLACED BY NOT INTCHG WITH 8-95617-23 ATTACHING PARTS | 1 | A | |
| - 6 | 61034809-3 | • PANEL ASSY, COCKPIT TRIM LH (98750) ATTACHING PARTS | 1 | 35 | |
| - 7 | A8587-82-3 | • NUT, <78553> 96-37303-001 | 2 | 35 | |
| - 8 | A6452-87-3 | • NUT, <78553> 96-37302-002 | PF | A | |
| | A6452-87-3 | • NUT, <78553> 96-37302-002 | 1 | 35 | |
| - 9 | NAS396-11-3 | • NUT (80205) | 1 | 35 | |
| - 10 | 99-51404-001 | • WASHER | 4 | 35 | |
| - 11 | MS24619-22 | • SCREW (96906) ----X---- | 4 | 35 | |
| - 12 | 8-95617-23 | • PANEL, COCKPIT TRIM LH REPLACES NOT INTCHG WITH 8-95617-9 ATTACHING PARTS | RF | 61 | 129 |
| - 13 | A6452-87-3 | • NUT, <78553> 96-37302-002 | RF | 61 | 129 |
| - 14 | 99-51404-001 | • WASHER | RF | 61 | 129 |
| - 15 | AN531-886 | • SCREW (88044) ----X---- | RF | 61 | 129 |
| - 16 | 62D35001-1 | • PANEL, COCKPIT TRIM LH (98750) ATTACHING PARTS | 1 | 35 | |
| - 17 | MS35206-230 | • SCREW (96906) | 1 | A | |
| | MS24619-22 | • SCREW (96906) ----X---- | 1 | 35 | |
| - 18 | MS25010-4A | • LIGHT ASSY (96906) | 1 | 35 | |
| | MS25037-327 | • LAMP (96906) | 1 | 35 | |
| - 19 | 8-95617-27 | • PANEL, COCKPIT TRIM LH REPLACED BY NOT INTCHG WITH 8-95617-43 ATTACHING PARTS | 1 | 35 | 159 |
| | 8-95617-43 | • PANEL, COCKPIT TRIM LH REPLACES NOT INTCHG WITH 8-95617-27 ATTACHING PARTS | 1 | 160 | |
| - 20 | A6452-873 | • NUT, LH <78553> 96-37302-001 | 1 | 35 | |
| - 21 | A6452-873 | • NUT, LH <78553> 96-37302-002 | 10 | 35 | |
| - 22 | 99-51404-001 | • WASHER, LH | 11 | 35 | |
| - 23 | MS24619-22 | • SCREW, LH (96906) ----X---- | 11 | 35 | |
| - 24 | | • VALVE ASSY, PRESSURE SUIT MANUAL CONTROL FOR BREAKDOWN SEE FIG. 2.13-15 | RF | | |
| - 25 | | • COVER ASSY, EMERGENCY HYDRAULIC POWER SEE FIG. 2.9-1 | RF | | |
| - 26 | 67E36622-1 | • PANEL COCKPIT TRIM LH (98750) | 1 | 35 | |
| - 27 | 66D40430-1 | • BRACKET (98750) | 1 | 35 | |
| - 28 | 66D40227-2 | • CLIP ASSY, RIVETED (98750) | 1 | 35 | |
| | 66D40430-1 | • BRACKET (98750) ATTACHING PARTS | 1 | 35 | |
| - 29 | MS35207-263 | • SCREW (96906) ----X---- | 3 | 35 | |
| - 30 | MS27406-5M | • SWITCH (91929) | 1 | 35 | |

A AIRPLANES #35 THRU 60, 130 AND ON

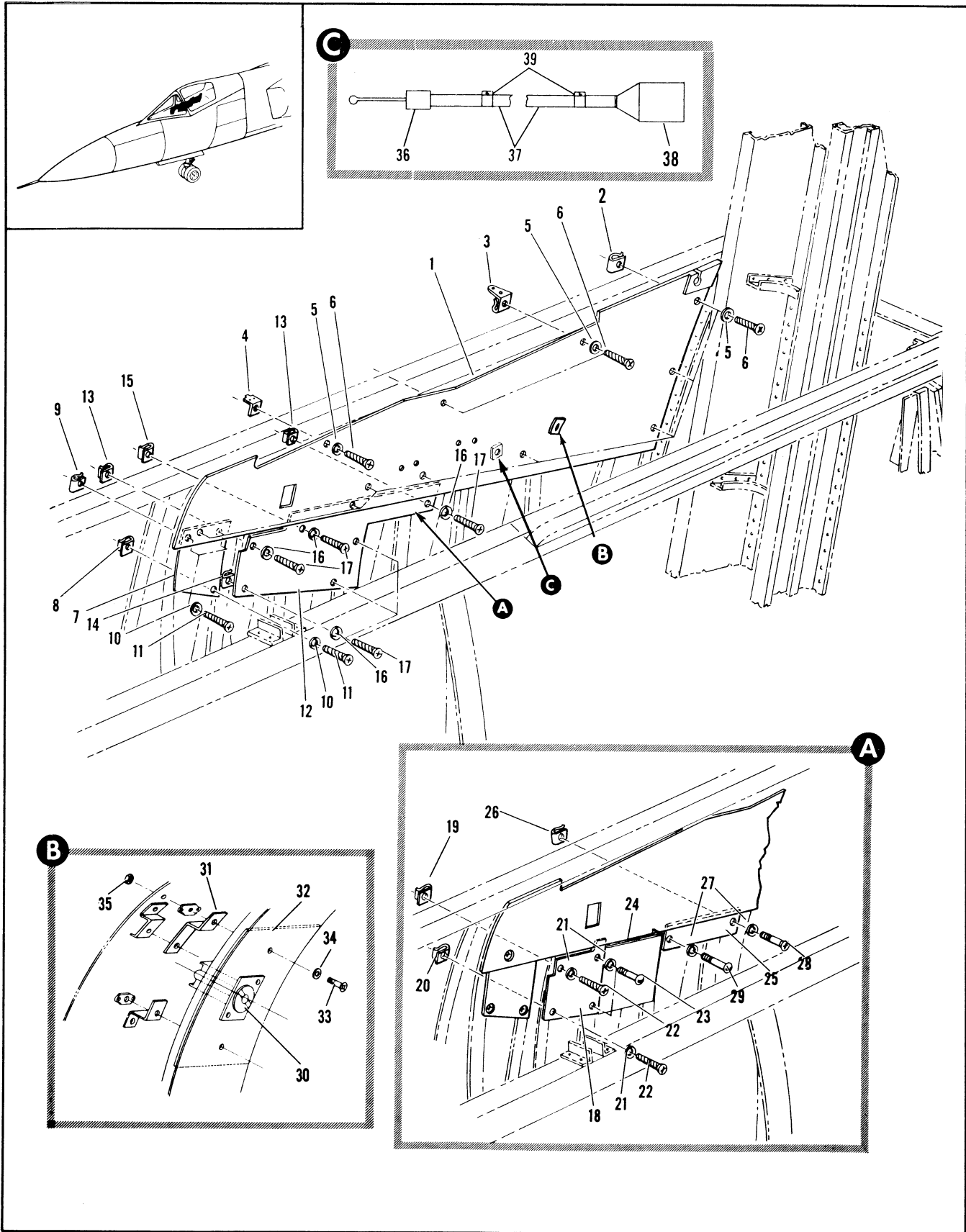


Figure 2.5-10. Cockpit Trim Installation RH

| FIGURE AND INDEX NUMBER | PART NUMBER | DESCRIPTION | UNITS PER ASSY. | USABLE ON CODE | |
|---------------------------|--------------|--|-----------------|----------------|----------|
| | | | | FROM | TO |
| 2.5-10 | 8-95592 | TRIM INSTALLATION, COCKPIT RH FOR NHA SEE FIG. 2-3-8 | RF | 35 | |
| - 1 | 7037094-17 | • PANEL, COCKPIT TRIM RH (98750) ATTACHING PARTS | 1 | 35 | |
| - 2 | A6452-823 | • NUT, RH <78553> 96-37302-002 | 8 | 35 | |
| - 3 | A5987-823 | • NUT, RH <78553> 96-37301-001 | 2 | 35 | |
| - 4 | A8567-823 | • NUT, RH <78553> 96-37303-001 | 1 | 35 | |
| - 5 | 99-51400-001 | • WASHER | 11 | 35 | |
| - 6 | MS24619-22 | • SCREW, RH (96906) ----X---- | 11 | 35 | |
| - 7 | 8-95617-31 | • PANEL, COCKPIT TRIM RH ATTACHING PARTS | 1 | 35 | |
| | 8-95617-31 | • PANEL COCKPIT TRIM R/H | RF | 35 | |
| | 8-61455-7 | • PANEL, FUEL QUANTITY SWITCH, NO. 7 TANK SEE FIG 2.5-1 | 1 | 35 | |
| - 8 | A6452-823 | • NUT, RH <78553> 96-37302-002 | 1 | 35 | |
| - 9 | A6459-823 | • NUT, RH <78553> 96-37302-001 | 2 | 35 | |
| - 10 | 99-51400-001 | • WASHER | 3 | 35 | |
| - 11 | MS24619-22 | • SCREW (96906) ----X---- | 3 | 35 | |
| - 12 | 8-95617-37 | • PANEL COCKPIT TRIM RH REPLACED BY NOT INTCHG WITH 8-95617-39 AND 8-95617-41 ATTACHING PARTS | 1 RF | 35 48 | 35 48 |
| - 13 | A6459-823 | • NUT, RH <78553> 96-37302-001 | 2 | 35 | 89 |
| - 14 | A6452-823 | • NUT, RH <78553> 96-37302-002 | 3 | 35 | 89 |
| - 15 | A8567-823 | • NUT, RH <78553> 96-37303-001 | 1 | 35 | 89 |
| - 16 | 99-51400-001 | • WASHER | 6 | 35 | 89 |
| - 17 | MS24619-22 | • SCREW, RH (96906) ----X---- | 6 | 35 | 89 |
| - 18 | 8-95617-39 | • PANEL, COCKPIT TRIM RH REPLACES NOT INTCHG WITH 8-95617-37 REPLACED BY SUITABLE SUB 8-95617-45 | RF | 90 | 129 |
| | 8-95617-45 | • PANEL, COCKPIT TRIM RH REPLACES SUITABLE SUB FOR 8-95617-39 ATTACHING PARTS | 1 | A | |
| - 19 | A6459-823 | • NUT, RH <78553> 96-37302-001 | 1 | 90 | |
| - 20 | A6452-823 | • NUT, RH <78553> 96-37302-002 | 1 | 90 | |
| | NAS1768A18 | • NUTPLATE (80205) | 2 | A | |
| - 21 | 99-51400-001 | • WASHER | 4 | 90 | |
| - 22 | MS24619-22 | • SCREW (96906) | 2 | 90 | |
| - 23 | MS35234-62 | • SCREW (96906) | RF | 90 | 129 |
| | MS24694-3 | • SCREW (96906) ----X---- | 2 | A | |
| - 24 | 8-95617-7 | • PANEL | 1 | A | |
| - 25 | 8-95617-41 | • PANEL, COCKPIT TRIM RH REPLACES NOT INTCHG WITH 8-95617-37 ATTACHING PARTS | 1 | A | |
| - 26 | A6459-823 | • NUT RH <78553> 96-3730--001 | 1 | 90 | |
| | NAS1768A18 | • NUT PLATE (80205) | 1 | A | |
| - 27 | 99-51400-001 | • WASHER | 2 | 90 | |
| - 28 | NAS021-10 | • SCREW (80205) | 1 | 90 | |
| | MS24694-3 | • SCREW (96906) | 1 | A | |
| - 29 | MS35236-62 | • SCREW (96906) | 1 | 90 | 129 |
| | MS24694-3 | • SCREW (96906) ----X---- | 1 | 130 | |
| A AIRPLANES 44, 90 AND ON | | | | | |

| FIGURE AND INDEX NUMBER | PART NUMBER | DESCRIPTION 1 2 3 4 5 6 | UNITS PER ASSY. | USABLE ON CODE | |
|-------------------------|-------------|---|-----------------|----------------|----|
| | | | | FROM | TO |
| 2.5-10- 30 | 119352 | • PHONE JACK | 1 | 35 | |
| - 31 | 7037093-01 | • BRACKET | 1 | 35 | |
| - 32 | 7037092-1 | • PLATE | 1 | 35 | |
| - 33 | MS24693-24 | • SCREW (96906) | 2 | 35 | |
| - 34 | MS20158-06K | • NUT PLATE (96906) | 2 | 35 | |
| - 35 | NAS390S10 | • WASHER (87205) | 2 | 35 | |
| - 36 | U93A/U | • CONNECTOR MODIFIED TO 7037096-10 (98750) | 1 | 35 | |
| - 37 | WM85U | • CABLE INTERPHONE MODIFIED TO 7037096-10 (98750) | 1 | 35 | |
| - 38 | U92A/U | • CONNECTOR MODIFIED TO 7037096-10 (98750) | 1 | 35 | |
| - 39 | MS21122 | • CLAMP MODIFIED TO 7037096-10 (98750) | 2 | 35 | |

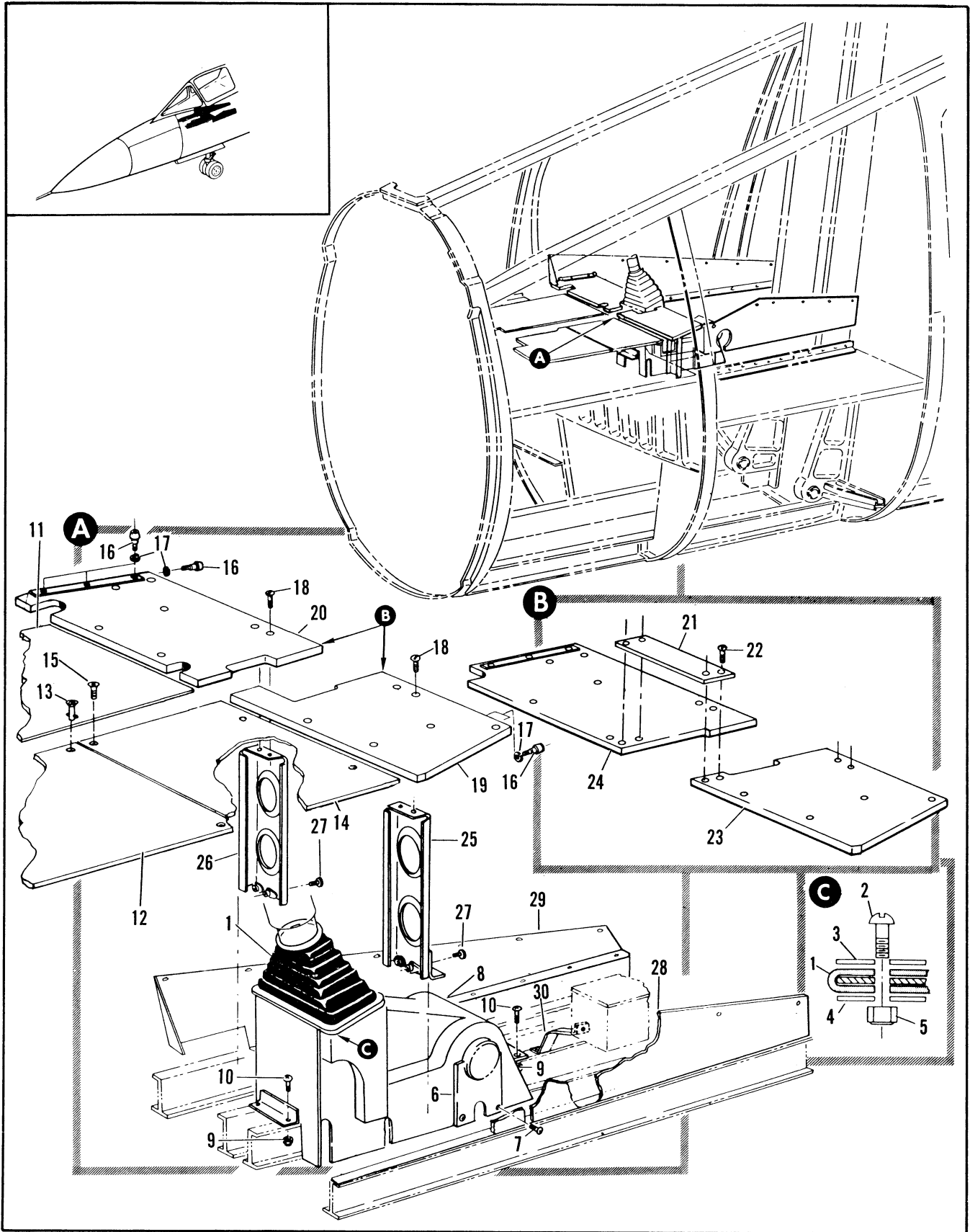


Figure 2.5-11. Cockpit Control Guards

| FIGURE AND INDEX NUMBER | PART NUMBER | DESCRIPTION | UNITS PER ASSY. | USABLE ON CODE | |
|-------------------------|-------------|--|-----------------|----------------|----|
| | | | | FROM | TO |
| 2.5-11 | | 1 2 3 4 5 6 | | | |
| | 8-94894 | COCKPIT CONTROL GUARDS | | | |
| | | • COVER INSTL, CENTER STICK CONTROL FOR NHA SEE FIG. 2.3-4 | PF | 35 | |
| - 1 | 4261 | • . BOOT, CENTER STICK CONTROL <84914> SPEC 8-09283-1 | 1 | 35 | |
| | | ATTACHING PARTS | | | |
| - 2 | MS35207-267 | • . SCREW (96906) | 4 | 35 | |
| - 3 | AN970 | • . WASHER (88144) | 4 | 35 | |
| - 4 | AN960010 | • . WASHER (88144) | 4 | 35 | |
| - 5 | MS21043-3 | • . NUT (96906) | 4 | 35 | |
| | | -----X----- | | | |
| - 6 | 8-94894-8 | • . DOOR | 1 | 35 | |
| | | ATTACHING PARTS | | | |
| - 7 | MS35206-245 | • . SCREW (96906) | 4 | 35 | |
| | | -----X----- | | | |
| - 8 | 8-94893-5 | • . COVER ASSY, CENTER STICK CONTROL RIVETED | 1 | 35 | |
| - 9 | NAS679A38 | • . NUT (80205) | 4 | 35 | |
| - 10 | MS35206-245 | • . SCREW (96906) | 4 | 35 | |
| | 8-95933 | • . PANEL INSTL, PILOTS FLOOR AND SCUFF | 1 | B | |
| | 8-95933-15 | | 1 | B | |
| - 11 | 8-95933-35 | • . PLATE ASSY, SCUFF BONDED | 1 | B | |
| - 12 | 8-95902-53 | • . PANEL ASSY, COCKPIT FLOOR LAMINATED | 1 | B | |
| | | ATTACHING PARTS | | | |
| - 13 | 5S7-37 | • . STUD, FASTENER <71286> 98-56512-001 | 3 | B | |
| | | -----X----- | | | |
| - 14 | 8-95902-71 | • . PLATE ASSY, COCKPIT FLOOR LAMINATED | 1 | B | |
| | | ATTACHING PARTS | | | |
| - 15 | MS24694-55 | • . SCREW (96906) | 4 | B | |
| | | -----X----- | | | |
| | 8-94893-801 | • . GUARD INSTL, COCKPIT CONTROL FOR NHA SEE FIG. 2.3-4 | RF | A | |
| | 8-94893-803 | • . GUARD INSTL, COCKPIT CONTROL FOR NHA SEE FIG. 2.3-4 | RF | B | |
| - 16 | AN227-1086 | • . STUD (88144) | 7 | 35 | |
| - 17 | MS35333-43 | • . WASHER (96906) | 7 | 35 | |
| | 8-95902-5 | • . PANEL ASSY, COCKPIT FLOOR | 1 | A | |
| | | ATTACHING PARTS | | | |
| - 18 | MS35207-266 | • . SCREW (96906) | 13 | A | |
| | | -----X----- | | | |
| - 19 | 8-95902-79 | • . . PANEL ASSY, COCKPIT FLOOR LH BONDED | 1 | A | |
| | | REPLACED BY NOT INTCHG WITH 8-95902-65 | | | |
| - 20 | 8-95902-80 | • . . PANEL ASSY, COCKPIT FLOOR RH BONDED | 1 | A | |
| | | REPLACED BY NOT INTCHG WITH 8-95902-805 | | | |
| - 21 | 8-94893-71 | • . COVER | 1 | B | |
| - 22 | MS35207-266 | • . SCREW (96906) | 4 | B | |
| - 23 | 8-95902-65 | • . PANEL ASSY, COCKPIT FLOOR LH BONDED | 1 | B | |
| | | REPLACES NOT INTCHG WITH 8-95902-79 | | | |
| - 24 | 8-95902-805 | • . PANEL ASSY, COCKPIT FLOOR RH BONDED | 1 | C | |
| | | REPLACES NOT INTCHG WITH 8-95902-80 | | | |
| | | REPLACED BY NOT INTCHG WITH 8-95902-807 | | | |
| | | A AIRPLANES #35 THRU 47 AND 49 THRU 89 | | | |
| | | B AIRPLANES #48, 90 AND ON | | | |
| | | C AIRPLANES #48 AND 90 THRU 155 | | | |

| FIGURE AND INDEX NUMBER | PART NUMBER | DESCRIPTION 1 2 3 4 5 6 | UNITS PER ASSY. | USABLE ON CODE | |
|-------------------------|-------------|--|-----------------|----------------|----|
| | | | | FROM | TO |
| 2.5-11 | 8-95922-807 | • • PANEL ASSY, COCKPIT FLOOR RH BONDED REPLACES NOT INTCHG WITH 8-95922-805 | 1 | 160 | |
| | MS35237-260 | • • SCREW (94906) | 13 | 8 | |
| - 25 | 8-94983-49 | • • SUPPORT ASSY, LH RIVETED | 1 | 35 | |
| - 26 | 8-94983-50 | • • SUPPORT ASSY, RH RIVETED | 1 | 35 | |
| - 27 | MS35236-62 | • • SCREW (94906) | 4 | 35 | |
| - 28 | 62E35618-7 | • • COVER ASSY, (98750) COCKPIT CONTROL LH STITCH | RF | 35 | |
| - 29 | 8-95926-3 | • • COVER ASSY, COCKPIT CONTROL RH STITCHED REPLACED BY SUITABLE SUB 8-95926-809 | 1 | 35 | 60 |
| | 8-95926-809 | • • COVER ASSY, COCKPIT CONTROL RH STITCHED REPLACES SUITABLE SUB FOR 8-95926-3 REPLACED BY SUITABLE SUB 8-95926-813 | 1 | 61 | 89 |
| | 8-95926-813 | • • COVER ASSY, COCKPIT CONTROL RH STITCHED REPLACES SUITABLE SUB FOR 8-95926-809 | 1 | 93 | |
| - 30 | 8-94983-87 | • • GUARD | RF | 166 | |
| | NAS679A3 | ATTACHING PARTS • • NUT (80205) | RF | 166 | |
| | AN3-4A | • • BOLT (88044) | RF | 166 | |
| | | -----X----- | | | |
| | | B AIRPLANES #48, 90 AND ON | | | |

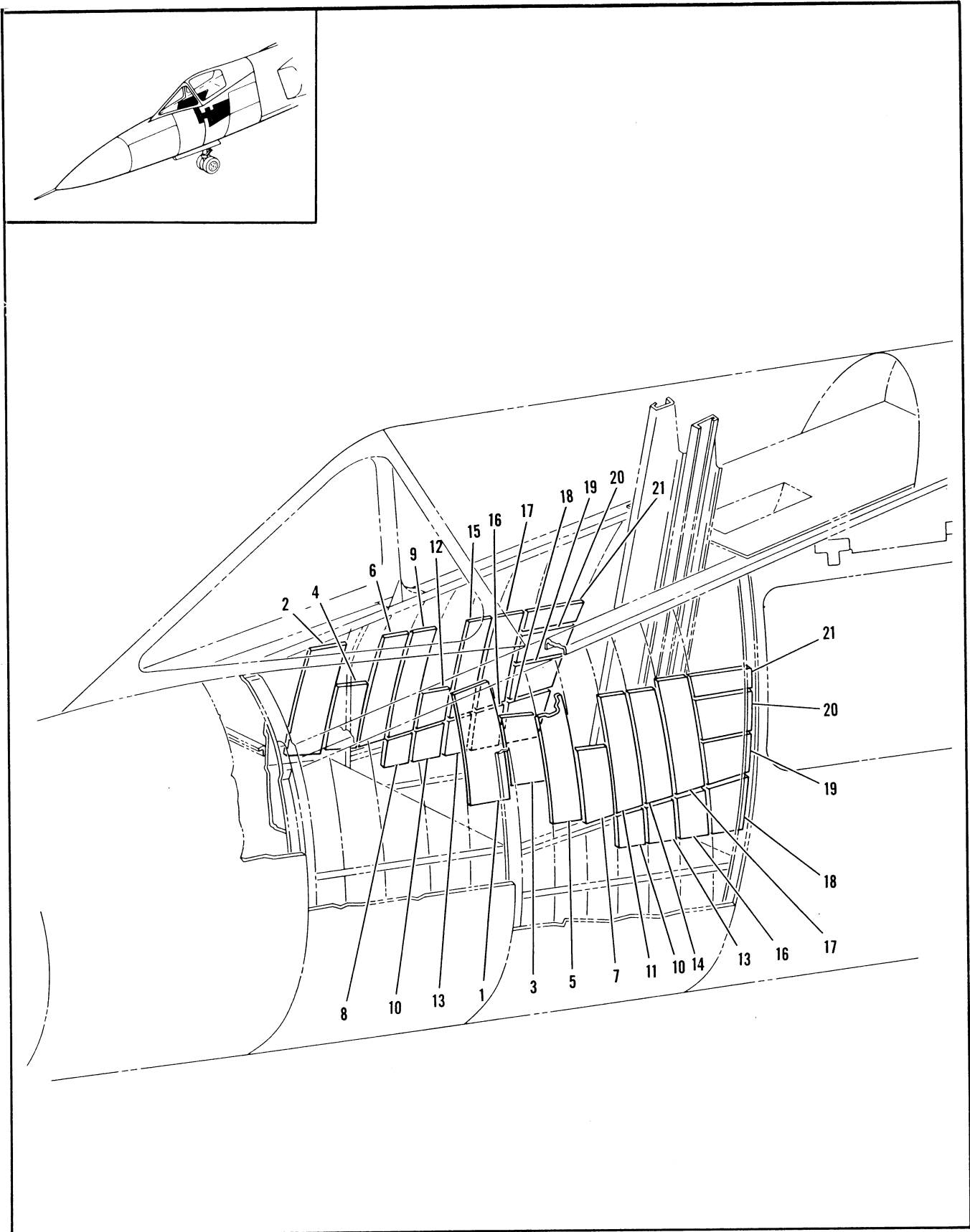


Figure 2.5-12. Thermal Cockpit Blanket Installation

| FIGURE AND INDEX NUMBER | PART NUMBER | DESCRIPTION | UNITS PER ASSY. | USABLE ON CODE | |
|-------------------------|-------------|---|-----------------|----------------|-----|
| | | | | FROM | TO |
| | | 1 2 3 4 5 6 | | | |
| 2.5-12 | 8-94812 | BLANKET INSTALLATION, THERMAL COCKPIT LH FOR NHA SEE FIG. 2.3-6 | RF | 35 | |
| | 8-94812-1 | BLANKET INSTALLATION, THERMAL COCKPIT RH FOR NHA SEE FIG. 2.3-8 | RF | 35 | |
| - 1 | 8-94812-7 | . BLANKET, LH | 1 | 35 | |
| - 2 | 8-94812-43 | . BLANKET, RH | 1 | 35 | |
| - 3 | 8-94812-9 | . BLANKET, LH | 1 | 35 | |
| - 4 | 8-94812-41 | . BLANKET, RH | 1 | 35 | |
| - 5 | 8-94812-11 | . BLANKET, LH | 1 | 35 | |
| - 6 | 8-94812-39 | . BLANKET, RH | 1 | 35 | |
| - 7 | 8-94812-13 | . BLANKET, LH | 1 | A | |
| | 8-94812-45 | . BLANKET, LH | 1 | 61 | 129 |
| - 8 | 8-94812-15 | . BLANKET, RH | 1 | 35 | |
| - 9 | 8-94812-37 | . BLANKET, RH | 1 | 35 | |
| - 10 | 8-94812-17 | . BLANKET | 1 | 35 | |
| - 11 | 8-94812-19 | . BLANKET, LH | 1 | 35 | |
| - 12 | 8-94812-35 | . BLANKET, RH | 1 | 35 | |
| - 13 | 8-94812-21 | . BLANKET | 1 | 35 | |
| - 14 | 8-94812-23 | . BLANKET, LH | 1 | 35 | |
| - 15 | 8-94812-19 | . BLANKET, RH | 1 | 35 | |
| - 16 | 8-94812-25 | . BLANKET | 1 | 35 | |
| - 17 | 8-94812-23 | . BLANKET | 1 | 35 | |
| - 18 | 8-94812-27 | . BLANKET | 1 | 35 | |
| - 19 | 8-94812-29 | . BLANKET | 1 | 35 | |
| - 20 | 8-94812-31 | . BLANKET | 1 | 35 | |
| - 21 | 8-94812-33 | . BLANKET | 1 | 35 | |
| | | A AIRPLANES #35 THRU 60, 130 AND ON | | | |

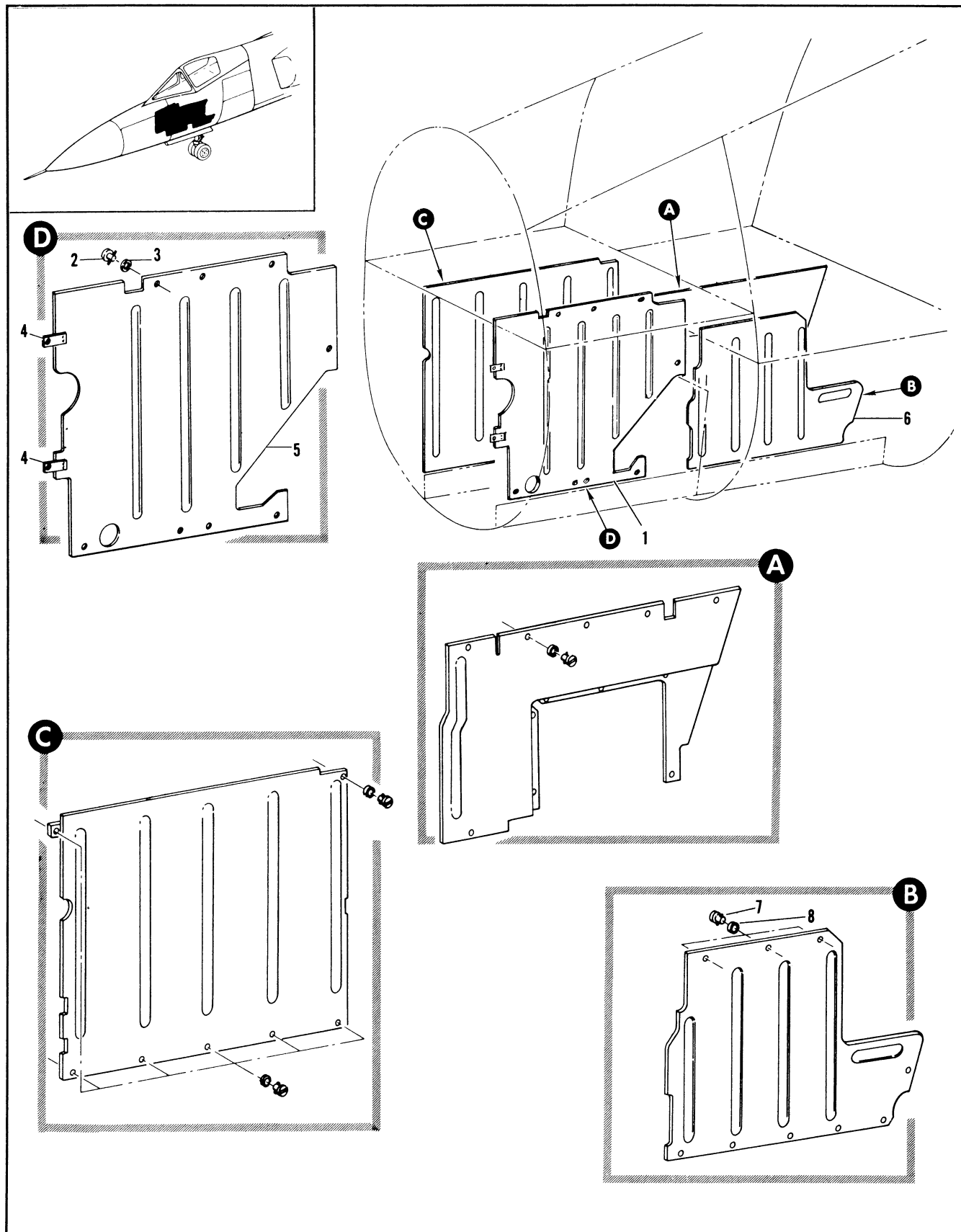


Figure 2.5-13. Nose Wheel Well Splash Cover Installation (Sheet 1 of 2)

| FIGURE AND INDEX NUMBER | PART NUMBER | DESCRIPTION | UNITS PER ASSY. | USABLE ON CODE | | |
|-------------------------|-------------|---|--|----------------|-----|----|
| | | | | FROM | TO | |
| 2.5-13 | 8-92938-808 | COVER INSTALLATION, NOSE WHEEL WELL SPLASH FOR NHA SEE FIG. 2.3-4 | RF | B | | |
| | 8-92938-817 | COVER INSTALLATION, NOSE WHEEL WELL SPLASH FOR NHA SEE FIG. 2.3-4 | RF | 61 | 89 | |
| | 8-92938-821 | COVER INSTALLATION, NOSE WHEEL WELL SPLASH FOR NHA SEE FIG. 2.3-4 | RF | C | | |
| | 8-92938-825 | COVER INSTALLATION, NOSE WHEEL WELL SPLASH FOR NHA SEE FIG. 2.3-4 | RF | 160 | | |
| | - 1 | 8-92939-75 | • COVER ASSY, SPLASH FWD LH REPLACED BY NOT INTCHG WITH 8-92939-121 | RF | 35 | 38 |
| | | 8-92939-121 | • COVER ASSY, SPLASH FWD LH REPLACES NOT INTCHG WITH 8-92939-75 | RF | D | |
| | | 8-92939-157 | • COVER ASSY, SPLASH FWD LH REPLACED BY SUITABLE SUB 8-92974-5 | RF | C | |
| | | 8-92974-5 | • COVER ASSY, SPLASH FWD LH REPLACES SUITABLE SUB FOR 8-92939-157 | RF | 160 | |
| | | 8-92974-11 | • COVER | RF | B | |
| | | 64034493-1 | • COVER ASSY, (98750) SPLASH FWD LH MAKE FROM 8-90801-15 | 1 | B | |
| | | 64034495-1 | • COVER ASSY, (98750) SPLASH FWD LH MAKE FROM 8-92939/157 | 1 | C | |
| | | 64034493-11 | • COVER ASSY, (98750) SPLASH FWD LH MAKE FROM 8-92939-121 | 1 | D | |
| | | 64034495-3 | • COVER ASSY, (98750) SPLASH FWD LH MAKE FROM 8-92974-5 | 1 | 160 | |
| - 2 | 5S5-5 | • • STUD, <71286> 98-56506-001 | 8 | 35 | 38 | |
| | 5S5-7 | • • STUD, <71286> 98-56506-002 | 8 | D | | |
| | 5S5-7 | • • STUD, <71286> 98-56506-002 | 6 | C | | |
| | 5S10-8 | • • STUD, <71286> 98-56509-006 | 9 | 160 | | |
| - 3 | 5S3-1 | • • WASHER, <71286> 99-53600-003 | 8 | A | | |
| | 5S3-1 | • • WASHER, <71286> 99-53600-003 | 6 | C | | |
| | 5S3-1 | • • WASHER, <71286> 99-53600-003 | 9 | 160 | | |
| | 5R2-1 | • RECEPTACLE, <71286> 97-31814-101 | AR | 35 | | |
| - 4 | 8-92938-83 | • CLIP ASSY, RIVETED | 2 | 35 | 159 | |
| - 5 | 8-92939-119 | • COVER | 1 | A | | |
| | 8-92939-155 | • COVER | 1 | C | | |
| | 8-92974-11 | • COVER | 1 | 160 | | |
| - 6 | 8-92939-83 | • COVER ASSY, SPLASH AFT LH REPLACED BY NOT INTCHG WITH 8-92939-93 | 1 | 35 | 38 | |
| | 8-92939-93 | • COVER ASSY, SPLASH AFT LH REPLACES NOT INTCHG WITH 8-92939-83 REPLACED BY NOT INTCHG WITH 8-92939-163 | 1 | D | | |
| | 8-92939-163 | • COVER ASSY, SPLASH AFT LH REPLACES NOT INTCHG WITH 8-92939-83 REPLACED BY SUITABLE SUB 8-92974-11 | 1 | C | | |
| | 8-92974-801 | • COVER ASSY, SPLASH AFT LH REPLACES SUITABLE SUB FOR 8-92939-163 | 1 | 160 | | |
| - 7 | 5S5-5 | • • STUD, <71286> 98-56506-001 | 9 | 35 | 38 | |
| | 5S5-7 | • • STUD, <71286> 98-56506-002 | 9 | 39 | 159 | |
| | 5S10-8 | • • STUD, <71286> 98-56509-006 | 9 | 160 | | |
| - 8 | 5S3-1 | • • WASHER, <71286> 99-53600-003 | 9 | 35 | | |

A AIRPLANES #35 THRU 47 AND 49 THRU 89
 B AIRPLANES #35 THRU 47 AND 49 THRU 60
 C AIRPLANES #48 AND 90 THRU 159
 D AIRPLANES #39 THRU 47 AND 49 THRU 89

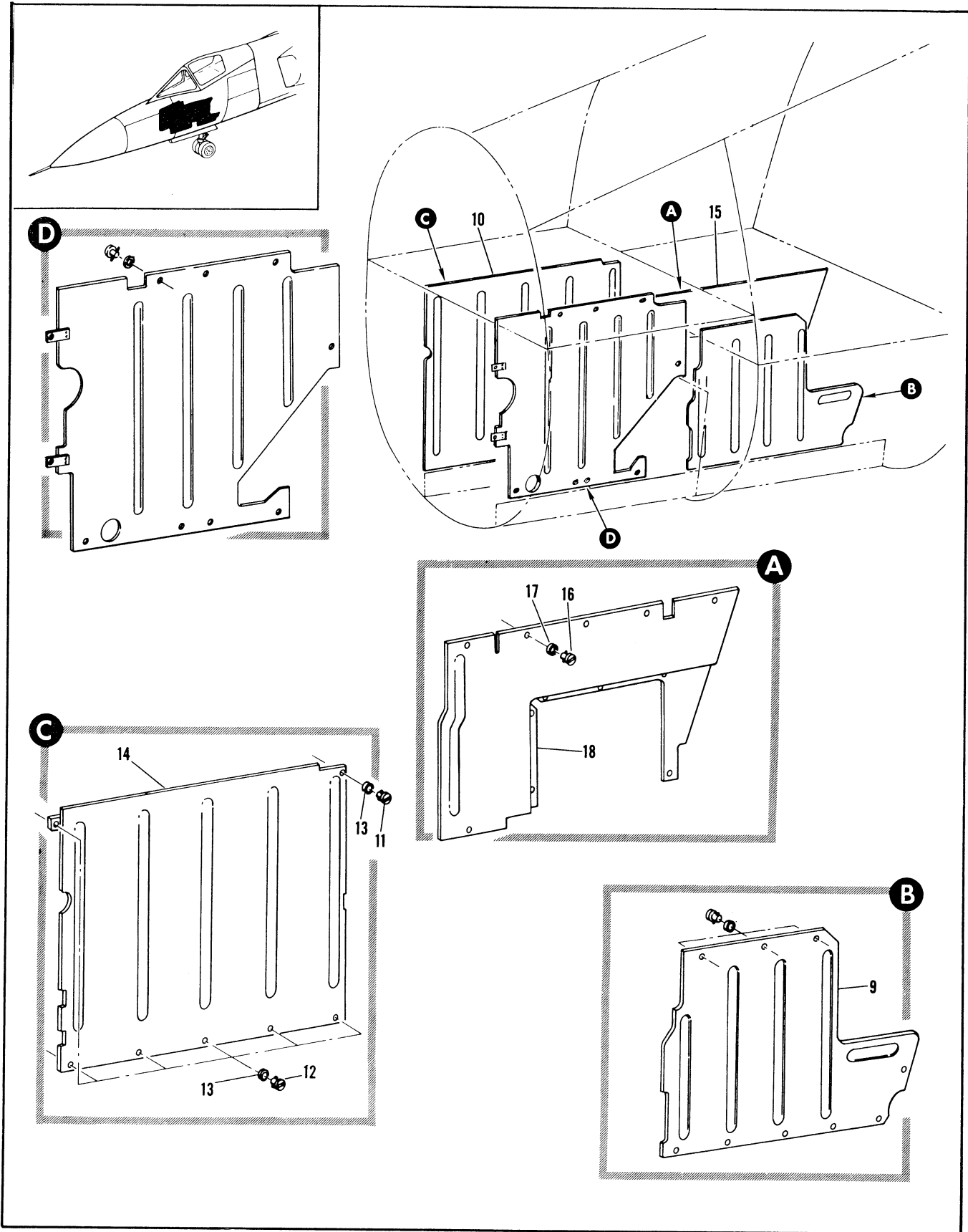


Figure 2.5-13. Nose Wheel Well Splash Cover Installation (Sheet 2 of 2)

| FIGURE AND INDEX NUMBER | PART NUMBER | DESCRIPTION | UNITS PER ASSY. | USABLE ON CODE | |
|-------------------------|-------------|--|-----------------|----------------|-----|
| | | | | FROM | TO |
| | | 1 2 3 4 5 6 | | | |
| 2.5-13 | 5R2-1 | • . RECEPTACLE, <71286> 97-31014-001 | 9 | 35 | |
| - 9 | 8-92939-91 | • . COVER | 1 | A | |
| | 8-92939-177 | • . COVER | 1 | C | |
| | 8-92974-13 | • . COVER | 1 | 160 | |
| - 10 | 8-92939-77 | • COVER ASSY, SPLASH FWD RH REPLACED BY NOT INTCHG WITH 8-92939-127 | 1 | 35 | 3P |
| | 8-92939-127 | • COVER ASSY, SPLASH FWD RH REPLACES NOT INTCHG WITH 8-92939-77 | 1 | D | |
| | 8-92939-161 | • COVER ASSY, SPLASH FWD RH REPLACED BY SUITABLE SUB 8-92974-3 | 1 | C | |
| | 8-92974-3 | • COVER ASSY, SPLASH FWD RH REPLACES SUITABLE SUB FOR 8-92939-161 | 1 | 160 | |
| - 11 | 5S5-7 | • . STUD, <71286> 98-56506-000 | 1 | 35 | 38 |
| - 12 | 5S5-9 | • . STUD, <71286> 98-56506-001 | 6 | 35 | 38 |
| | 5S5-7 | • . STUD, <71286> 98-56506-002 | 7 | 39 | 159 |
| | 5S10-8 | • . STUD, <71286> 98-56509-006 | 7 | 160 | |
| - 13 | 5S3-1 | • . WASHER, <71286> 99-53600-003 | 7 | 35 | |
| | 5R2-1 | • . RECEPTACLE, <71286> 97-31014-001 | 7 | 35 | |
| - 14 | 8-92939-125 | • . COVER | 1 | A | A |
| | 8-92939-159 | • . COVER | 1 | C | |
| | 8-92974-9 | • . COVER | 1 | 160 | |
| - 15 | 8-92939-57 | • COVER ASSY, SPLASH AFT RF REPLACED BY NOT INTCHG WITH 8-92939-111 | 1 | 35 | 3P |
| | 8-92939-111 | • COVER ASSY, SPLASH AFT RH REPLACES NOT INTCHG WITH 8-92939-57 REPLACED BY NOT INTCHG WITH 8-92939-153 | 1 | E | |
| | 8-92939-153 | • COVER ASSY, SPLASH AFT RH REPLACES NOT INTCHG WITH 8-92939-111 REPLACED BY NOT INTCHG WITH 8-92939-165 | 1 | 61 | 89 |
| | 8-92939-165 | • COVER ASSY, SPLASH AFT RH REPLACED BY SUITABLE SUB 8-92974-1 REPLACED BY SUITABLE SUB 8-92974-1 OR 8-92939-5 | 1 | F | |
| | 8-92939-5 | • COVER ASSY, SPLASH AFT RH REPLACES SUITABLE SUB FOR 8-92939-165 REPLACED BY SUITABLE SUB 8-92974-1 OR 8-92939-803 | 1 | 130 | 159 |
| | 8-92974-1 | • COVER ASSY, SPLASH AFT RH REPLACES SUITABLE SUB FOR 8-92939-165 OR 8-92939-5 REPLACED BY SUITABLE SUB 8-92974-803 | 1 | 160 | 189 |
| | 8-92974-803 | • COVER ASSY, SPLASH AFT RH REPLACES SUITABLE SUB FOR 8-92974-1 8-92939-5 OR 8-92939-165 | 1 | 189 | |
| - 16 | 5S5-5 | • . STUD, <71286> 98-56506-001 | 12 | 35 | 38 |
| | 5S5-7 | • . STUD, <71286> 98-56506-002 | 12 | D | |
| | 5S5-7 | • . STUD, <71286> 98-56506-002 | 7 | C | |
| | 5S10-8 | • . STUD, <71286> 98-56509-006 | 11 | 160 | |
| - 17 | 5S3-1 | • . WASHER, <71286> 99-53600-003 | 12 | A | |
| | 5S3-1 | • . WASHER, <71286> 99-53600-003 | 7 | C | |
| | 5S3-1 | • . WASHER, <71286> 99-53600-003 | 11 | 160 | |
| | 5R2-1 | • . RECEPTACLE, <71286> 97-31014-001 | AR | 35 | |
| - 18 | 8-92939-109 | • . COVER | 1 | B | |
| | 8-92939-151 | • . COVER | 1 | 61 | 89 |
| | 8-92939-167 | • . COVER | 1 | C | |
| | 8-92974-7 | • . COVER | 1 | 160 | 189 |
| | 8-92974-15 | • . COVER | 1 | 189 | |
| | | A AIRPLANES #35 THRU 47 AND 49 THRU 89 | | | |
| | | B AIRPLANES #35 THRU 47 AND 49 THRU 60 | | | |
| | | C AIRPLANES #48 AND 90 THRU 159 | | | |
| | | D AIRPLANES #39 THRU 47 AND 49 THRU 89 | | | |
| | | E AIRPLANES #39 THRU 47 AND 49 THRU 60 | | | |
| | | F AIRPLANES #48 AND 90 THRU 129 | | | |

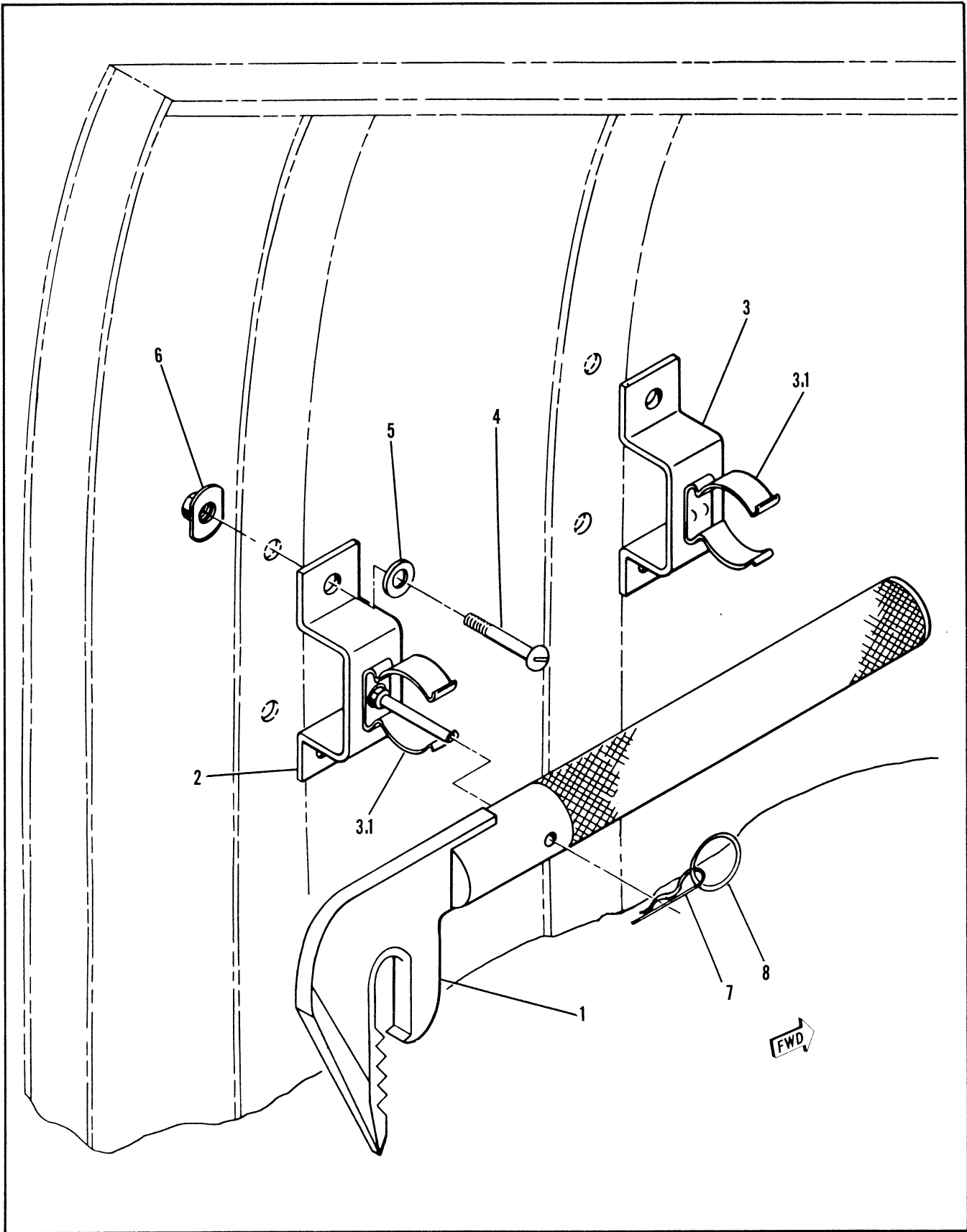


Figure 2.5-14. Canopy Breaker Tool and Storage Facility Installation

| FIGURE AND INDEX NUMBER | PART NUMBER | DESCRIPTION | UNITS PER ASSY. | USABLE ON CODE | |
|-------------------------|--------------|---|-----------------|----------------|----|
| | | | | FROM | TO |
| | | 1 2 3 4 5 6 | | | |
| 2.5-14 | 66F38478 | • CANOPY BREAKER TOOL AND STORAGE FACILITY INSTALLATION (98750) | 1 | ALL | |
| - 1 | 66F38223-3 | • • TOOL (98750) | 1 | ALL | |
| - 2 | 7446088-10 | • • BRACKET ASSEMBLY (98750) | 1 | ALL | |
| - 3 | 7446088-50 | • • BRACKET ASSEMBLY (98750) | 1 | ALL | |
| - 3.1 | 100-200-15-1 | • • CLIP (99378) | 1 | ALL | |
| | | (ATTACHING PARTS) | | | |
| - 4 | MS35207-262 | • • SCREW (96906) | 4 | ALL | |
| - 5 | AN960-10L | • • WASHER (88044) | 4 | ALL | |
| - 6 | MS21059-30 | • • NUT PLATE (96906) | 4 | ALL | |
| - 7 | AN415-2 | • • PIN (80044) | 1 | ALL | |
| - 8 | 14 | • • RING (10266) | 1 | ALL | |

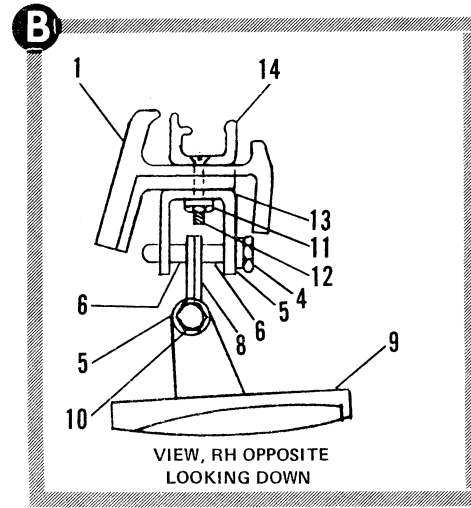
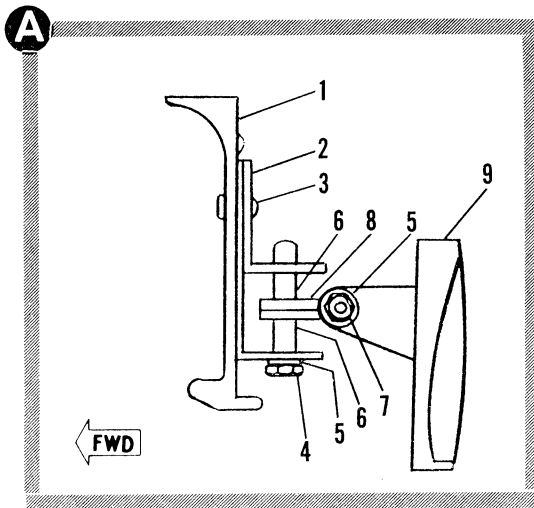
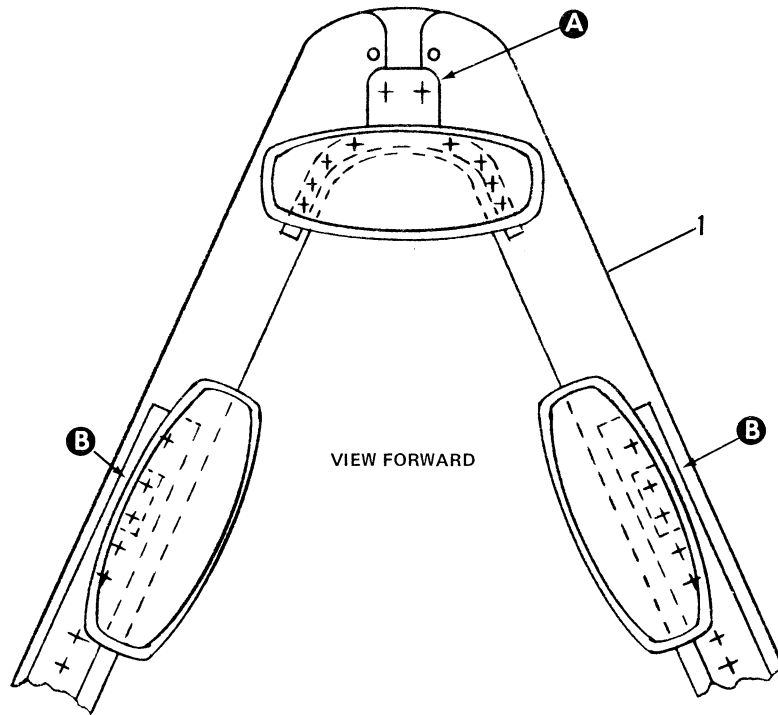


Figure 2.5-15. Rear View Mirror Installation

| FIGURE AND INDEX NUMBER | PART NUMBER | DESCRIPTION | UNITS PER ASSY. | USABLE ON CODE | |
|-------------------------|---------------|--------------------------------|-----------------|----------------|----|
| | | | | FROM | TO |
| | | 1 2 3 4 5 6 | | | |
| 2.5-15 | NO NUMBER | • REARVIEW MIRROR INSTALLATION | RF | 35 | |
| - 1 | NO NUMBER | • CANOPY FRAME | RF | 35 | |
| - 2 | 7545927-10 | • • BRACKET (98750) | 1 | | |
| - 3 | MS20470AD6-10 | • • RIVET (96906) | 2 | | |
| - 4 | NAS1003-11 | • • BOLT (80205) | 3 | | |
| - 5 | AN960FD10 | • • WASHER (88044) | 3 | | |
| - 6 | NAS43DD3-18 | • • SPACER (80205) | 2 | | |
| - 7 | NAS679C3M | • • NUT (80205) | 2 | | |
| - 8 | 7545926-01 | • • HINGE (98750) | 1 | | |
| - 9 | R19NM6 | • • MIRROR | 1 | | |
| - 10 | NAS1003-54 | • • BOLT (80205) | 1 | | |
| - 11 | MS21042-3 | • • NUT (96906) | 2 | | |
| - 12 | NAS1203-5 | • • BOLT (80205) | 1 | | |
| - 13 | 7545925-10 | • • BRACKET (98750) | 1 | | |
| - 14 | R-74029 | • • RETAINER | 1 | | |

